



Works approval number	W6676/2022/1
Works approval holder	B & J Catalano Pty Ltd
ACN	008 961 975
Registered business address	1 South Western Highway BRUNSWICK WA 6224
DWER file number	DER2022/000075
Duration	16/08/2022 to 16/08/2027
Date of issue	16/08/2022
Date of amendment	13/12/2022
Premises details	B & J Catalano Pty Ltd Eatha Road CHITTERING WA 6084 Legal description - Part of Lot 42 on Deposited Plan 410794 Certificate of Title Volume 2929 Folio 44 As defined by the premises maps depicted in Schedule 1.

Prescribed premises category description (Schedule 1, <i>Environmental Protection Regulations 1987</i>)	Assessed production / design capacity
Category 12: Screening, etc. of material: premises (other than premises within category 5 or 8) on which material extracted from the ground is screened, washed, crushed, ground, milled, sized or separated.	250,000 tonnes per annum

This amended Works Approval is granted to the Works Approval Holder, subject to the attached conditions, on 13 December 2022, by:

**A/MANAGER, RESOURCE INDUSTRIES
REGULATORY SERVICES**

an officer delegated under section 20 of the *Environmental Protection Act 1986* (WA)

Works approval history

Date	Reference number	Summary of changes
16/08/2022	W6672/2022/1	Works approval granted.
13/12/2022	W6672/2022/1	Works approval amended to modify the noise validation monitoring requirements during Time Limited Operations as specified under Condition 7.

Interpretation

In this works approval:

- (a) the words 'including', 'includes' and 'include' in conditions mean "including but not limited to", and similar, as appropriate;
- (b) where any word or phrase is given a defined meaning, any other part of speech or other grammatical form of that word or phrase has a corresponding meaning;
- (c) where tables are used in a condition, each row in a table constitutes a separate condition;
- (d) any reference to an Australian or other standard, guideline, or code of practice in this works approval:
 - (i) if dated, refers to that particular version; and
 - (ii) if not dated, refers to the latest version and therefore may be subject to change over time;
- (e) unless specified otherwise, any reference to a section of an Act refers to that section of the EP Act; and
- (f) unless specified otherwise, all definitions are in accordance with the EP Act.

NOTE: This works approval requires specific conditions to be met but does not provide any implied authorisation for other emissions, discharges, or activities not specified in this works approval.

Works approval conditions

The works approval holder must ensure that the following conditions are complied with:

Construction phase

Infrastructure and equipment

1. The works approval holder must:
 - (a) construct and/or install the infrastructure;
 - (b) in accordance with the corresponding design and construction requirements; and
 - (c) at the corresponding infrastructure location as set out in Table 1.

Table 1: Design and construction / installation requirements

Item	Infrastructure	Design and construction / installation requirements	Infrastructure location
1.	Mobile crushing and screening plant with associated equipment	(a) Installation and setup of mobile equipment consisting of the following machinery (or equivalent): <ul style="list-style-type: none"> • Striker 1320 Crusher; • Finlay Screen 693; • Striker 25m Staker; • CAT 980 Front End Loader; and • D10/D9 bulldozer; (b) Installation of dust suppression spray bar within the crushing and screening plant.	Located within each stage of the Prescribed Premises boundary depicted in Figure 1 and Figure 2 of Schedule 1.
2.	Noise bunds (stage 9)	(a) 8m high product stockpile noise bund to be positioned on the eastern side of the crushing and screening plant to provide noise attenuation to the residences located to the East of Stage 9 excavation area.	Located within the Stage 9 extraction area as depicted in Figure 3 of Schedule 1.
3.	Stormwater Management Infrastructure	(a) Five detention ponds to be constructed in the locations shown in Figure 4 (four within Stage 9) and Figure 5 (one within Stage 10) of Schedule 1, for the collection of sediment laden stormwater runoff and to serve as silt traps;	Located in accordance with the Stormwater Management Infrastructure Maps as depicted in Figure 4 and Figure 5 of Schedule 1.
		(b) Storage capacity of each detention pond within the excavation areas is to be designed and constructed in accordance with the dimensions specified in Table 4 of Schedule 2;	
		(c) Design capacity of each detention pond must be sized to contain a 2	

Item	Infrastructure	Design and construction / installation requirements	Infrastructure location
		<p>hour, 10% (1 in 10 year) AEP rainfall event; and</p> <p>(d) Cut-off drains to be constructed using topsoil along the southern edge of Stage 9 and the eastern and northern edges of Stage 10 to ensure stormwater runoff is directed away from operational areas.</p>	

Compliance reporting

2. The works approval holder must within 30 calendar days of an item of infrastructure or equipment required by condition 1 being constructed and/or installed:
 - (a) undertake an audit of their compliance with the requirements of condition 1; and
 - (b) prepare and submit to the CEO an Environmental Compliance Report on that compliance.
3. The Environmental Compliance Report required by condition 2, must include as a minimum the following:
 - (a) certification by a site manager that the items of infrastructure or component(s) thereof, as specified in condition 1, have been constructed in accordance with the relevant requirements specified in condition 1;
 - (b) as constructed plans and a detailed site plan for each item of infrastructure or component of infrastructure specified in condition 1; and
 - (c) be signed by a person authorised to represent the works approval holder and contains the printed name and position of that person.

Time limited operations phase

Commencement and duration

4. The works approval holder may only conduct time limited operations for an item of infrastructure specified in condition 5:
 - (a) for a period not exceeding 90 calendar days from the day the works approval holder meets the requirements of condition 2 for that item of infrastructure; or
 - (b) until such time as a licence for that item of infrastructure is granted in accordance with Part V of the *Environmental Protection Act 1986*, if one is granted before the end of the period specified in condition 4(a).

Time limited operations requirements

5. During time limited operations, the works approval holder must ensure that the premises infrastructure and equipment listed in Table 2 and located at the corresponding infrastructure location is maintained and operated in accordance with the corresponding operational requirement set out in Table 2.

Table 2: Infrastructure and equipment requirements during time limited operations

	Site infrastructure and equipment	Operational requirements	Infrastructure location
1.	Mobile crushing and screening plant with associated equipment	<ul style="list-style-type: none"> (a) Must operate within the staged areas within the Prescribed Premises boundary; (b) Operations are restricted to the daytime hours of 7am to 6pm Mondays to Fridays, and 7am to 1pm Saturdays, with crushing and screening operations restricted to Monday to Friday; (c) Dust suppression spray bar must be operated within the plant to minimise dust generation; and (d) Record volumes of raw material processed through the crushing and screening plant. 	Located within each stage of the Prescribed Premises boundary depicted in Figure 1 and Figure 2 of Schedule 1.
2	Noise bunds	<ul style="list-style-type: none"> (a) Noise bunds shall be maintained at 8m high during crushing and screening operations for stage 9. 	Located within the Stage 9 extraction area as depicted in Figure 3 of Schedule 1.
3	Topsoil Stockpile material	<ul style="list-style-type: none"> (a) Stockpiles to be treated with polymer based spray-on soil stabiliser if they do not stabilise by crusting and grass regrowth. 	Located within each stage of the Prescribed Premises boundary depicted in Figure 1 and Figure 2 of Schedule 1.
4.	Stormwater Management Infrastructure	<ul style="list-style-type: none"> (a) Potentially contaminated stormwater to be captured and prevented from being released in the environment; (b) Ensure that uncontaminated stormwater is kept separate from contaminated or potentially contaminated stormwater; and (c) Sedimentation basins must be inspected on a weekly basis and following significant rainfall events to prevent overflowing of contaminated stormwater. 	Located in accordance with the Stormwater Management Infrastructure Maps as depicted in Figure 4 and Figure 5 of Schedule 1.
3.	Water Cart	<ul style="list-style-type: none"> (a) Water cart must be available at all times at the Premises during operation phase to manage dust emissions in and around the plant area, product stockpile areas and unsealed access roads. 	Within the Prescribed premises boundary depicted in Figure 1 and Figure 2 of Schedule 1.

Emissions and discharges

Dust emissions

6. The works approval holder must manage dust emissions generated at the Premises by:
- (a) wetting down unsealed roads and exposed areas with a water truck;
 - (b) wetting down stockpiles and dust generating operational areas;
 - (c) ceasing dust-generating activities during strong wind conditions until such time as adequate watering has occurred or wind conditions have changed;
 - (d) ensuring truck loads are fully covered prior to leaving the Premises; and
 - (e) limiting all vehicle traffic within operational areas and along haulage routes and roads to speeds of less than 30km/hr.

Monitoring during time limited operations

7. During the time-limited operations phase within the stage 9 extraction area authorised in condition 4, the works approval holder must retain the services of a person qualified and experienced in the area of environmental noise assessment and who by their qualifications and experience is eligible to hold membership of the Australian Acoustical Society or the Australian Association of Acoustical Consultants to:
- a) investigate the nature and extent of noise emissions from the premises including undertaking noise monitoring during normal crushing and screening operations within the stage 9 extraction area at the boundary of the closest noise sensitive human receptor;
 - b) assess in accordance with the methodology required in the *Environmental Protection (Noise) Regulations 1997*, the compliance of the noise emissions from the Primary Activities, against the relevant assigned levels specified in those Regulations; and
 - c) compile and submit to the works approval holder a report in accordance with condition 8 within 30 days of completing the investigation required by condition 7(a).

Compliance reporting

8. The report prepared pursuant to condition 7(c) is to include:
- (a) a description of the methods used for monitoring and/or modelling of noise emissions from the premises;
 - (b) details and the results of the investigation undertaken pursuant to condition 7(a); and
 - (c) details and results of the assessment of the noise emissions from the premises, against the relevant assigned levels in the *Environmental Protection (Noise) Regulations 1997* undertaken pursuant to condition 7(b).
9. The works approval holder must submit to the CEO the report prepared pursuant to condition 7(c) within 14 days of receiving it.
10. Where an assessment pursuant to condition 7(b) indicates that noise emissions do not comply with the relevant assigned levels in the *Environmental Protection (Noise) Regulations 1997*, the works approval holder must:

- (a) within 60 days of receiving an assessment report pursuant to condition 7(c) prepare a plan to ensure the undertaking of the licensed activity will no longer lead to any contravention of the *Environmental Protection (Noise) Regulations 1997*; and
 - (b) provide to the CEO a copy of the plan prepared pursuant to condition 10(a) within 30 days of its preparation.
- 11. A report prepared pursuant to condition 10(b) is to include timeframes for the completion of additional noise mitigation measures.
- 12. The works approval holder may recommence time limited operations of the infrastructure specified in condition 5 upon implementation of all noise mitigation measures identified in accordance with condition 10(b).
- 13. Where operations are recommenced in accordance with condition 12, the works approval holder must notify the CEO in writing a minimum of 48 hours prior to recommencing time limited operations.
- 14. The works approval holder must submit to the CEO a report on the time limited operations within 30 calendar days of the completion date of time limited operations.
- 15. The works approval holder must ensure the report required by condition 14 includes the following:
 - (a) a summary of the time limited operations, including timeframes and amount of material processed;
 - (b) a summary of the environmental performance of all infrastructure as constructed or installed;
 - (c) a review of performance and compliance against the conditions of the works approval; and
 - (d) where the manufacturer's design specifications and the conditions of this works approval have not been met, what measures will the works approval holder take to meet them, and what timeframes will be required to implement those measures.

Records and reporting (general)

- 16. The works approval holder must record the following information in relation to complaints received by the works approval holder (whether received directly from a complainant or forwarded to them by the Department or another party) about any alleged emissions from the premises:
 - (a) the name and contact details of the complainant, (if provided);
 - (b) the time and date of the complaint;
 - (c) the complete details of the complaint and any other concerns or other issues raised; and
 - (d) the complete details and dates of any action taken by the works approval holder to investigate or respond to any complaint.
- 17. The works approval holder must maintain accurate and auditable books including the following records, information, reports, and data required by this works approval:
 - (a) the works conducted in accordance with condition 1;
 - (b) any maintenance of infrastructure that is performed in the course of complying with condition 5;

- (c) monitoring programmes undertaken in accordance with condition 7; and
- (d) complaints received under condition 16.

18. The books specified under condition 17 must:

- (a) be legible;
- (b) if amended, be amended in such a way that the original version(s) and any subsequent amendments remain legible and are capable of retrieval;
- (c) be retained by the works approval holder for the duration of the works approval; and
- (d) be available to be produced to an inspector or the CEO as required.

Definitions

In this works approval, the terms in Table 3 have the meanings defined.

Table 3: Definitions

Term	Definition
ACN	Australian Company Number
Books	has the same meaning given to that term under the EP Act.
CEO	means Chief Executive Officer. CEO for the purposes of notification means: Director General Department administering the <i>Environmental Protection Act 1986</i> Locked Bag 10 Joondalup DC WA 6919 info@dwer.wa.gov.au
Condition	Condition means a condition to which this Works Approval is subject under s.62 of the EP Act.
Department	means the department established under section 35 of the <i>Public Sector Management Act 1994</i> and designated as responsible for the administration of Part V Division 3 of the EP Act.
Discharge	has the same meaning given to that term under the EP Act.
Emission	has the same meaning given to that term under the EP Act.
Environmental Compliance Report	means a report to satisfy the CEO that the conditioned infrastructure and/or equipment has been constructed and/or installed in accordance with the works approval.
EP Act	<i>Environmental Protection Act 1986</i> (WA).
EP Regulations	<i>Environmental Protection Regulations 1987</i> (WA).
Premises	the premises to which this works approval applies, as specified at the front of this licence and as shown on the Premises maps (Figure 1 and Figure 2) in Schedule 1 to this works approval.
Prescribed Premises	has the same meaning given to that term under the EP Act.
Primary Activities	Means Category 12 prescribed premises activities as defined in Schedule 1 Part 1 of the EP Regulations.
Stage 9 extraction area	The area within the Prescribed Premises boundary as defined in Figure 1.

Term	Definition
Time Limited Operations	refers to the operation of the infrastructure and equipment identified under this works approval that is authorised for that purpose, subject to the relevant conditions.
Works Approval	refers to this document, which evidences the grant of the works approval by the CEO under section 54 of the EP Act, subject to the conditions.
Works Approval Holder	refers to the occupier of the premises being the person to whom this works approval has been granted, as specified at the front of this works approval.

END OF CONDITIONS

Schedule 1: Maps

Premises map – Stage 9

The boundary of the Prescribed Premises for the Stage 9 extraction area is depicted by the red line as shown in the map below (Figure 1).

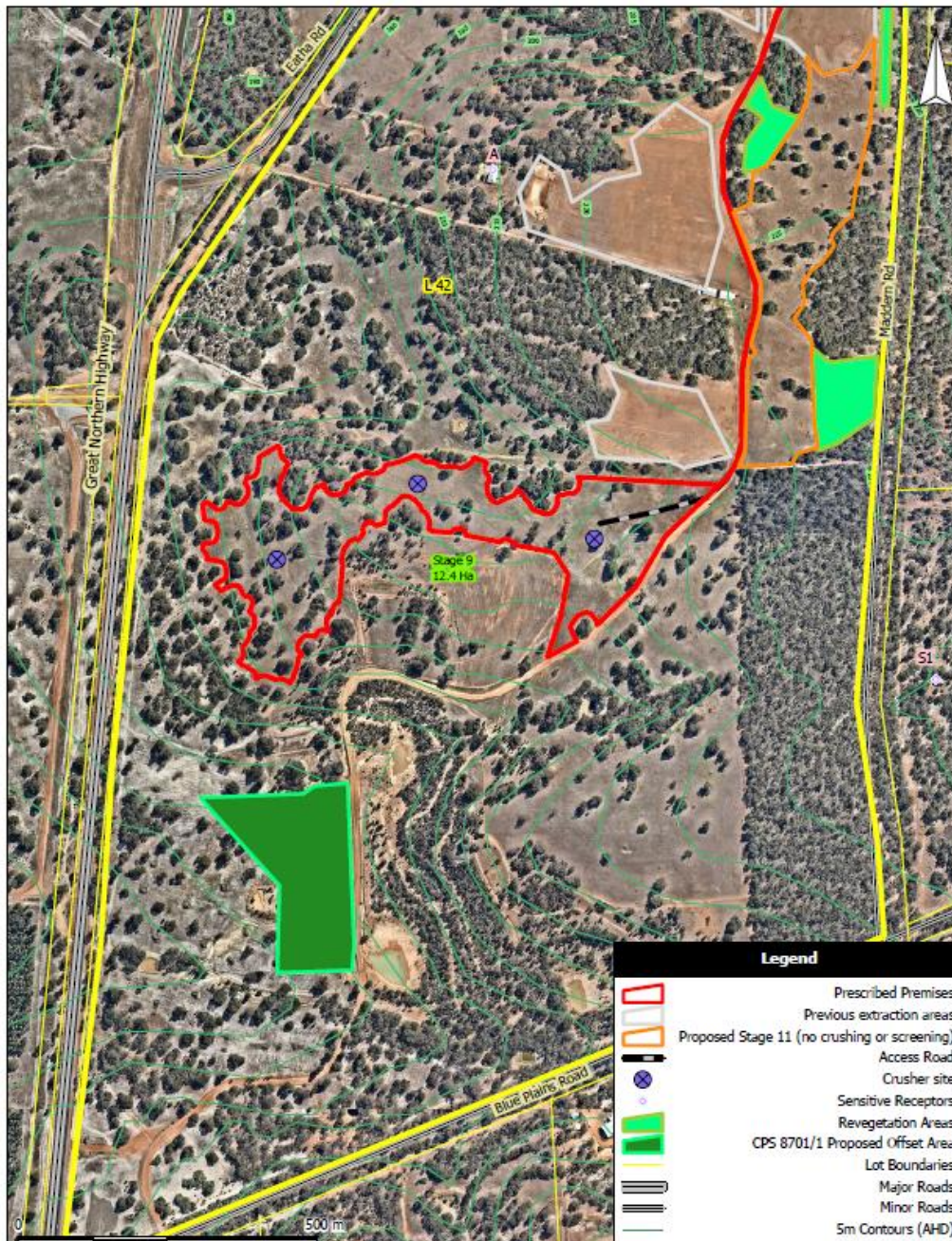


Figure 1: Map of the boundary of the prescribed premises of the Stage 9 extraction area

Premises map – Stage 10

The boundary of the Prescribed Premises for the Stage 10 extraction area is depicted by the red line as shown in the map below (Figure 2).

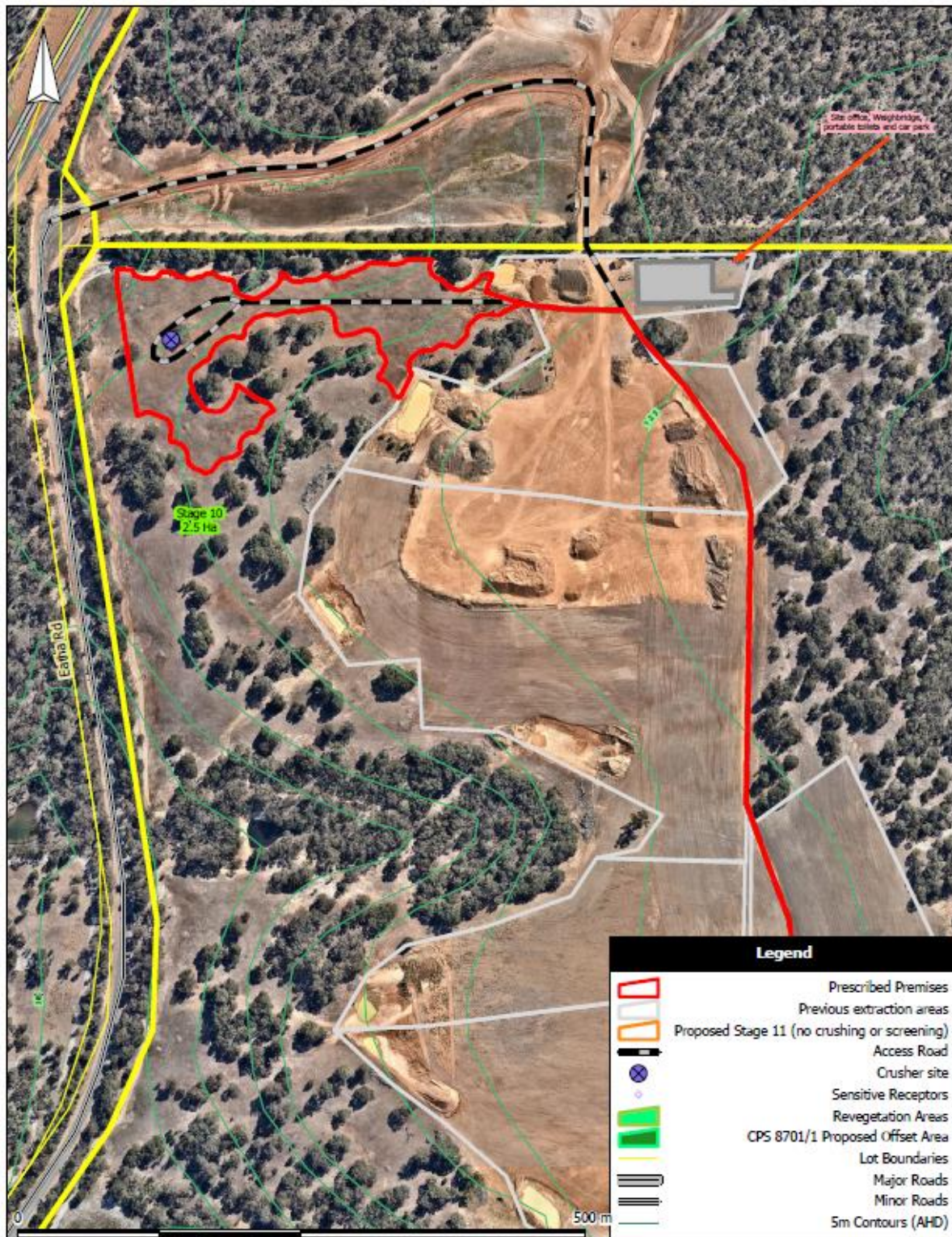


Figure 2: Map of the boundary of the prescribed premises of the Stage 10 extraction area

Premises map depicting noise bund locations

The noise bunds to be constructed around the eastern side of the crushing and screening plant locations within the Stage 9 extraction area (Figure 3).



Figure 3: Locations of noise bunds within Stage 9 extraction area

Stormwater Infrastructure Map – Stage 9

The stormwater management infrastructure proposed to be constructed at the Premises for Stage 9 is shown in the map below (Figure 4).



Figure 4: Stormwater Management Infrastructure for Stage 9 at the Premises

Stormwater Infrastructure Map – Stage 10

The stormwater management infrastructure proposed to be constructed at the Premises for Stage 10 is shown in the map below (Figure 5).



Figure 5: Stormwater Management Infrastructure for Stage 10 at the Premise

Schedule 2: Specifications of detention ponds

Stormwater Detention Ponds Capacity

The required storage capacity of the detention ponds for the Stage 9 and 10 extraction areas are listed in Table 4.

Table 4: Storage capacity of stormwater detention ponds

Catchment	Detention Pond Storage Capacity (m ² x 10 ³)	Infrastructure location
9a	0.840	Located in accordance with the Stormwater Management Infrastructure Map as depicted in Figure 4 and Schedule 1.
9b	0.640	
9c	0.827	
9d	1.138	
10	0.670	Located in accordance with the Stormwater Management Infrastructure Map as depicted in Figure 5 of Schedule 1.
TOTAL	4.113	