



| | |
|------------------------------------|--|
| Works approval number | W6697/2022/1 |
| Works approval holder | Golden Spur Resources Pty Ltd |
| ACN | 161 329 933 |
| Registered business address | Ground Floor, 24 Outram Street WEST PERTH WA 6005 |
| DWER file number | DER2022/000087 |
| Duration | 4 October 2022 to 4 October 2025 |
| Date of issue | 4 October 2022 |
| Premises details | Bellevue Gold Project – Wastewater Treatment Plant Legal description Mining tenement M36/299 |

| Prescribed premises category description (Schedule 1, <i>Environmental Protection Regulations 1987</i>) | Assessed design capacity |
|---|----------------------------|
| Category 54: Sewage facility | 150 m ³ per day |

This works approval is granted to the works approval holder, subject to the attached conditions, on 4 October 2022, by:

Samara Rogers

A/MANAGER RESOURCE INDUSTRIES

REGULATORY SERVICES

an officer delegated under section 20 of the *Environmental Protection Act 1986* (WA)

Works approval history

| Date | Reference number | Summary of changes |
|-----------|------------------|-------------------------|
| 4/10/2022 | W6697/2022/1 | Works approval granted. |

Interpretation

In this works approval:

- (a) the words ‘including’, ‘includes’ and ‘include’ in conditions mean “including but not limited to”, and similar, as appropriate;
- (b) where any word or phrase is given a defined meaning, any other part of speech or other grammatical form of that word or phrase has a corresponding meaning;
- (c) where tables are used in a condition, each row in a table constitutes a separate condition;
- (d) any reference to an Australian or other standard, guideline, or code of practice in this works approval:
 - (i) if dated, refers to that particular version; and
 - (ii) if not dated, refers to the latest version and therefore may be subject to change over time;
- (e) unless specified otherwise, any reference to a section of an Act refers to that section of the EP Act; and
- (f) unless specified otherwise, all definitions are in accordance with the EP Act.

NOTE: This works approval requires specific conditions to be met but does not provide any implied authorisation for other emissions, discharges, or activities not specified in this works approval.

Works approval conditions

The works approval holder must ensure that the following conditions are complied with:

Construction phase

Infrastructure and equipment

1. The works approval holder must:
 - (a) construct and/or install the infrastructure and/or equipment;
 - (b) in accordance with the corresponding design and construction / installation requirements; and
 - (c) at the corresponding infrastructure location; and
 - (d) within the corresponding timeframe,as set out in Table 1.

Table 1: Design and construction / installation requirements

| | Infrastructure | Design and construction / installation requirements | Infrastructure location |
|----|----------------|--|--|
| 1. | WWTP | <ol style="list-style-type: none">a) Auger spiral screenb) 4 x 50m³ equalisation tanks with mixer with heavy duty liner, internal roof coating, valves and level Instrument.c) 1x 200m³ sequencing batch reaction tank with aerator, heavy duty liner, decant weir, float level switches, DO sensor, valvesd) Sodium hypochlorite automated chlorine analyser and dosing system with 200L chemical tank and bund with low level switch.e) 2x 50m³ treated effluent tank roofed with heavy duty liner, including valves and level Instrument.f) 50kL sludge tankg) Associated pumps and interconnecting pipelines. | As shown in Schedule 1, Figure 1 |
| 2. | Spray field | <ol style="list-style-type: none">a) Minimum footprint of 49,000m²b) 5 meter spray drift buffer between perimeter fence and furthest extent of spray.c) Above ground hammer type sprinklers capable of delivering spray over a radius of 30m, with 5mm nozzlesd) Fauna proof fencing erected around the perimeter of the spray fieldse) Safety signage every 50m of fencing | As shown in Schedule 1, Figure 1 and boundaries defined by Schedule 2, Table |

Compliance reporting

2. The works approval holder must within 60 calendar days of an item of infrastructure or equipment required by condition 1 being constructed and/or installed:
 - (a) undertake an audit of their compliance with the requirements of condition 1; and
 - (b) prepare and submit to the CEO an Environmental Compliance Report on that compliance.
3. The Environmental Compliance Report required by condition 2, must include as a minimum the following:
 - (a) certification by a civil engineer that the items of infrastructure or component(s) thereof, as specified in condition 1, have been constructed in accordance with the relevant requirements specified in condition 1;
 - (b) as constructed plans and a detailed site plan for each item of infrastructure or component of infrastructure specified in condition 1; and
 - (c) be signed by a person authorised to represent the works approval holder and contains the printed name and position of that person.

Environmental commissioning phase

Environmental commissioning requirements and emission limits

4. The works approval holder may only commence environmental commissioning of an item of infrastructure listed in condition 5 once the Environmental Compliance Report has been submitted for that item of infrastructure in accordance with condition 2 of this works approval.
5. Any environmental commissioning activities undertaken for an item of infrastructure specified in Table 2 may only be carried out:
 - (a) in accordance with the corresponding commissioning requirements; and
 - (b) for the corresponding authorised commissioning duration.

Table 2: Environmental commissioning requirements

| Infrastructure | Commissioning requirements | Authorised commissioning duration |
|----------------|--|---|
| WWTP | <ol style="list-style-type: none">a) Volumetric flow meters are maintained on the WWTP outlet to the irrigation field;b) Sludge is contained within sealed sludge tanks prior too removal by a licensed waste carrier for disposal to a licensed disposal facility;c) Spills of wastewater and chemicals are outside of a vessel/container are cleaned up immediately. | For a period not exceeding 90 calendar days in aggregate. |
| Spray field | <ol style="list-style-type: none">a) Not more than 100 m3 per day of treated effluent to be applied to the designated irrigation area;b) Irrigation is managed to prevent ponding and pooling of effluent on the ground surface of the irrigation spray field;c) No treated effluent is permitted to be discharged outside of the irrigation area identified in Schedule 1 and Schedule 2; andd) Spray field is inspected daily during periods of irrigation. | |

Commissioning – authorised discharge points for emissions

6. During environmental commissioning, the works approval holder must ensure that the emission(s) specified in Table 3, are discharged only from the corresponding discharge point(s) and only at the corresponding discharge point location(s).

Table 3: Authorised discharge points during commissioning

| | Emission | Discharge point | Discharge point location |
|----|------------------|-----------------|----------------------------------|
| 1. | Treated effluent | Spray field | As shown in Schedule 1: Figure 1 |

Monitoring during environmental commissioning

7. The works approval holder must monitor emissions during environmental commissioning in accordance with Table 4.

Table 4: Emissions and discharge monitoring during environmental commissioning

| Discharge point | Monitoring location | Parameter | Frequency | Averaging Period | Unit | Method |
|-----------------|------------------------------|---------------------------|------------|------------------|-----------|----------------|
| Spray field | Flow meter | Volume | Continuous | Cumulative daily | kL/day | N/A |
| | Treated effluent tank outlet | Biochemical Oxygen Demand | Weekly | Spot sample | mg/L | AS/NZS 5667.10 |
| | | Total Suspended Solids | | | | |
| | | Total Nitrogen | | | | |
| | | Total Phosphorous | | | | |
| | | pH ¹ | | | - | |
| | | <i>E Coli</i> | | | cfu/100mL | |
| | | Residual chlorine | Continuous | N/A | mg/L | |

Note 1 – non-NATA in situ testing permitted

8. All sample analysis, unless otherwise specified, must be undertaken by laboratories with current accreditation from the National Association of Testing Authorities (NATA) for relevant parameters, unless otherwise specified in Table 4.
9. The works approval holder must record the results of all monitoring activity required by condition 7.

Environmental Commissioning Report

10. The works approval holder must submit to the CEO an Environmental Commissioning Report within 30 calendar days of the completion date of environmental commissioning for each item of infrastructure specified in Table 2.

- 11.** The works approval holder must ensure the Environmental Commissioning Report required by condition 10 of this works approval includes the following:
- (a) a summary of the environmental commissioning activities undertaken, including timeframes and amount of wastewater processed;
 - (b) a summary of the treated effluent monitoring results recorded in accordance with condition 9;
 - (c) copies of laboratory reports for treated effluent monitoring results recorded in accordance with condition 9;
 - (d) a summary of the environmental performance of each item of infrastructure or equipment as constructed or installed, which at minimum includes records detailing the:
 - (i) a comparison of the treated effluent monitoring results against discharge limits specified in condition 16; and
 - (ii) assessment of the irrigation field performance against operational requirements in condition 5.
 - (e) a review of the works approval holder's performance and compliance against the conditions of this works approval; and
 - (f) where they have not been met, measures proposed to meet the manufacturer's design specifications and the conditions of this works approval, together with timeframes for implementing the proposed measures.

Time limited operations phase

Commencement and duration

- 12.** The works approval holder may only commence time limited operations for an item of infrastructure identified in condition 1:
- (a) where the item of infrastructure is not authorised to undertake environmental commissioning, the Environmental Compliance Report as required by condition 2 has been submitted by the works approval holder for that item of infrastructure; and
 - (b) where the item of infrastructure is authorised to undertake environmental commissioning under condition 5, the Environmental Commissioning Report for that item of infrastructure as required by condition 10 has been submitted by the works approval holder.
- 13.** The works approval holder may conduct time limited operations for an item of infrastructure specified in condition 14 (as applicable):
- (a) for a period not exceeding 180 calendar days from the day the works approval holder meets the requirements of condition 12 for that item of infrastructure; or
 - (b) until such time as a licence for that item of infrastructure is granted in accordance with Part V of the *Environmental Protection Act 1986*, if one is granted before the end of the period specified in condition 13(a).

Time limited operations requirements and emission limits

- 14.** During time limited operations, the works approval holder must ensure that the premises infrastructure and equipment listed in Table 5 and located at the corresponding infrastructure location is maintained and operated in accordance with the corresponding operational requirement set out in Table 5.

Table 5: Infrastructure and equipment requirements during time limited operations

| | Site infrastructure and equipment | Operational requirement | Infrastructure location |
|----|-----------------------------------|---|----------------------------------|
| 1. | WWTP | a) Volumetric flow meters are maintained on the WWTP outlet to the irrigation field; b) Sludge is contained within sealed sludge tanks prior too removal by a licensed waste carrier for disposal to a licensed disposal facility; and c) Spills of wastewater and chemicals are outside of a vessel/container are cleaned up immediately. | As shown in Schedule 1, Figure 1 |
| 2. | Spray field | a) Not more than 100 m3 per day of treated effluent to be applied to the designated irrigation area; b) Irrigation is managed to prevent ponding and pooling of effluent on the ground surface of the irrigation spray field; c) No treated effluent is permitted to be discharged outside of the irrigation area identified in Schedule 1 and Schedule 2; and d) Spray field is inspected daily during periods of irrigation. | As shown in Schedule 1, Figure 1 |

15. During time limited operations, the works approval holder must ensure that the emission(s) specified in Table 6, are discharged only from the corresponding discharge point(s) and only at the corresponding discharge point location(s).

Table 6: Authorised discharge points

| | Emission | Discharge point | Discharge point location |
|----|------------------|-----------------|----------------------------------|
| 1. | Treated effluent | Spray field | As shown in Schedule 1: Figure 1 |

16. During time limited operations, the works approval holder must ensure that the emissions from the discharge point listed in Table 7 do not exceed the corresponding limit(s) when monitored in accordance with condition 17.

Table 7: Emission and discharge limits during time limited operations

| Discharge point | Parameter | Limit |
|-----------------|---------------------------|------------------|
| Spray field | Biochemical Oxygen Demand | <20 mg/L |
| | Total Suspended Solids | <30 mg/L |
| | Total Nitrogen | <30 mg/L |
| | Total Phosphorous | <8 mg/L |
| | pH ¹ | 6.5 – 8.5 |
| | <i>E Coli</i> | <1000 cfu/100 mL |
| | Residual chlorine | 0.2 – 2.0 mg/L |

Monitoring during time limited operations

17. The works approval holder must monitor emissions during time limited operations in accordance with Table 8.

Table 8: Emissions and discharge monitoring during time limited operations

| Discharge point | Monitoring location | Parameter | Frequency | Averaging Period | Unit | Method |
|-----------------|------------------------------|-------------------|------------|------------------|-----------|----------------|
| Spray field | Flow meter | Volume | Continuous | Cumulative daily | kL/day | N/A |
| | Treated effluent tank outlet | BOD | Weekly | Spot sample | mg/L | AS/NZS 5667.10 |
| | | TSS | | | | |
| | | TN | | | | |
| | | TP | | | | |
| | | pH ¹ | | | - | |
| | | E Coli | | | cfu/100mL | |
| | | Residual chlorine | Continuous | N/A | mg/L | |

Note1 – non-NATA *in-situ* testing permitted

18. All sample analysis, unless otherwise specified, must be undertaken by laboratories with current accreditation from the National Association of Testing Authorities (NATA) for relevant parameters, unless otherwise specified in Table 8
19. The works approval holder must record the results of all monitoring activity required by condition 17.

Compliance reporting

20. The works approval holder must submit to the CEO a report on the time limited operations within 60 calendar days of the completion date of time limited operations or 90 calendar days before the expiration date of the works approval, whichever is the sooner.
21. The works approval holder must ensure the report required by condition 20 includes the following:
- a summary of the time limited operations, including timeframes and amount of wastewater processed;
 - a summary of monitoring parameter results obtained during time limited operations under condition 17.
 - copies of laboratory reports for treated effluent monitoring results recorded in accordance with condition 19.
 - a summary of the environmental performance of each item of infrastructure or equipment as installed, which at minimum includes records detailing the:
 - a comparison of the treated effluent monitoring results against discharge limits specified in condition 16; and
 - assessment of the irrigation field performance against operational

requirements in condition 14.

- (e) a review of the works approval holder's performance and compliance against the conditions of this works approval; and
- (f) where they have not been met, measures proposed to meet the manufacturer's design specifications and the conditions of this works approval, together with timeframes for implementing the proposed measures.

Records and reporting (general)

- 22.** The works approval holder must record the following information in relation to complaints received by the works approval holder (whether received directly from a complainant or forwarded to them by the Department or another party) about any alleged emissions from the premises:
- (a) the name and contact details of the complainant, (if provided);
 - (b) the time and date of the complaint;
 - (c) the complete details of the complaint and any other concerns or other issues raised; and
 - (d) the complete details and dates of any action taken by the works approval holder to investigate or respond to any complaint.
- 23.** The works approval holder must maintain accurate and auditable books including the following records, information, reports, and data required by this works approval:
- (a) the works conducted in accordance with condition 1;
 - (b) any maintenance of infrastructure that is performed in the course of complying with conditions 5 and 14;
 - (c) monitoring programmes undertaken in accordance with conditions 7 and 17; and
 - (d) complaints received under condition 22.
- 24.** The books specified under condition 23 must:
- (a) be legible;
 - (b) if amended, be amended in such a way that the original version(s) and any subsequent amendments remain legible and are capable of retrieval;
 - (c) be retained by the works approval holder for the duration of the works approval; and
 - (d) be available to be produced to an inspector or the CEO as required.

Definitions

In this works approval, the terms in Table 9 have the meanings defined.

Table 9: Definitions

| Term | Definition |
|------------------------------------|---|
| books | has the same meaning given to that term under the EP Act. |
| CEO | means Chief Executive Officer. CEO for the purposes of notification means: Director General Department administering the <i>Environmental Protection Act 1986</i> Locked Bag 10 Joondalup DC WA 6919 info@dwer.wa.gov.au |
| Department | means the department established under section 35 of the <i>Public Sector Management Act 1994</i> and designated as responsible for the administration of Part V Division 3 of the EP Act. |
| discharge | has the same meaning given to that term under the EP Act. |
| emission | has the same meaning given to that term under the EP Act. |
| environmental commissioning | means the sequence of activities to be undertaken to test equipment integrity and operation, or to determine the environmental performance, of equipment and infrastructure to establish or test a steady state operation and confirm design specifications. |
| Environmental Commissioning Report | means a report on any commissioning activities that have taken place and a demonstration that they have concluded, with focus on emissions and discharges, waste containment, and other environmental factors. |
| Environmental Compliance Report | means a report to satisfy the CEO that the conditioned infrastructure and/or equipment has been constructed and/or installed in accordance with the works approval. |
| EP Act | <i>Environmental Protection Act 1986</i> (WA). |
| EP Regulations | <i>Environmental Protection Regulations 1987</i> (WA). |
| premises | the premises to which this licence applies, as specified at the front of this licence and as shown on the premises map (Figure 1) in Schedule 1 to this works approval. |
| prescribed premises | has the same meaning given to that term under the EP Act. |

| Term | Definition |
|-------------------------|---|
| time limited operations | refers to the operation of the infrastructure and equipment identified under this works approval that is authorised for that purpose, subject to the relevant conditions. |
| waste | has the same meaning given to that term under the EP Act. |
| WWTP | Wastewater treatment plant |
| works approval | refers to this document, which evidences the grant of the works approval by the CEO under section 54 of the EP Act, subject to the conditions. |
| works approval holder | refers to the occupier of the premises being the person to whom this works approval has been granted, as specified at the front of this works approval. |

END OF CONDITIONS

Schedule 1: Maps

Premises map

The boundary of the prescribed premises is shown in the map below (

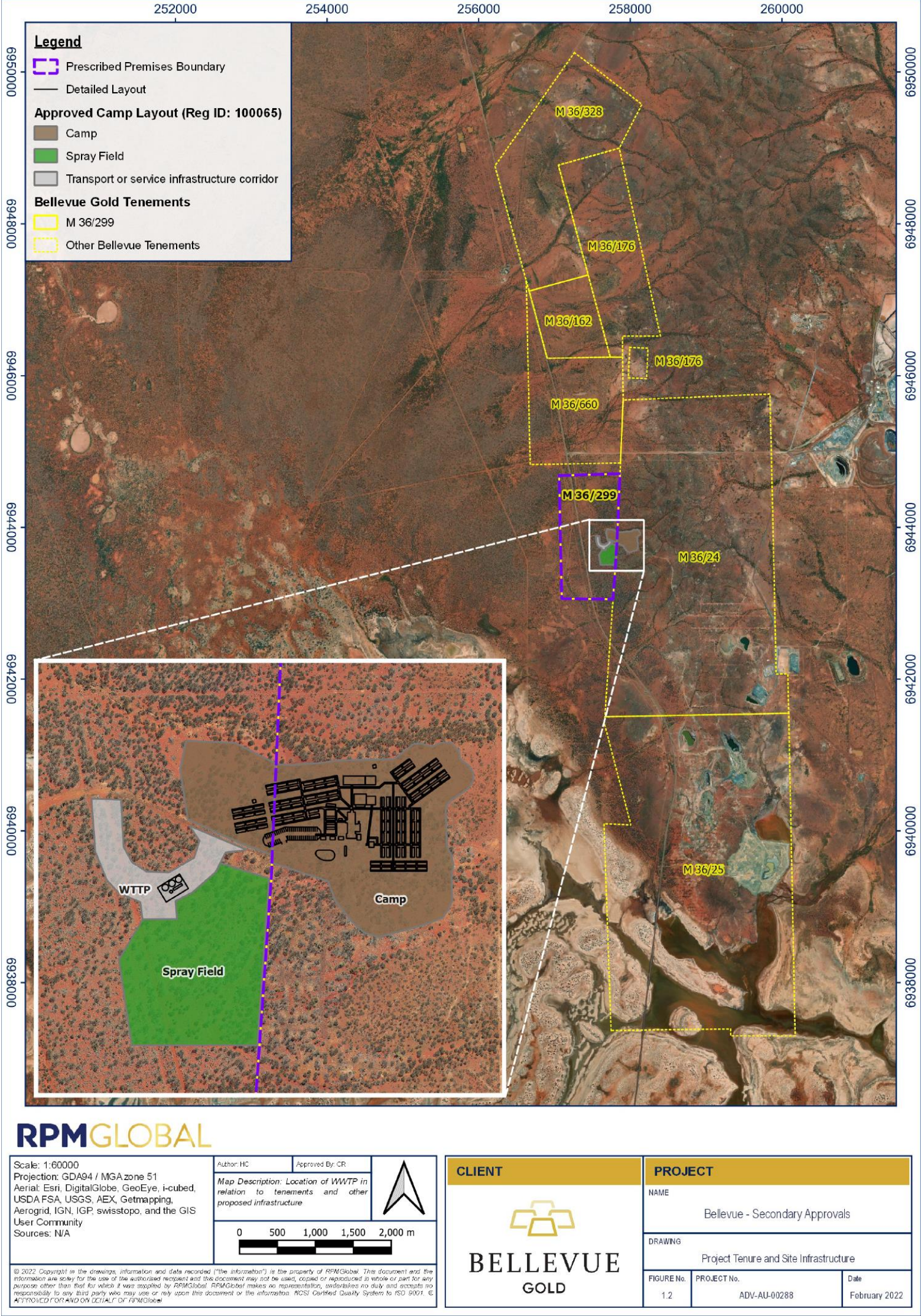


Figure 1).

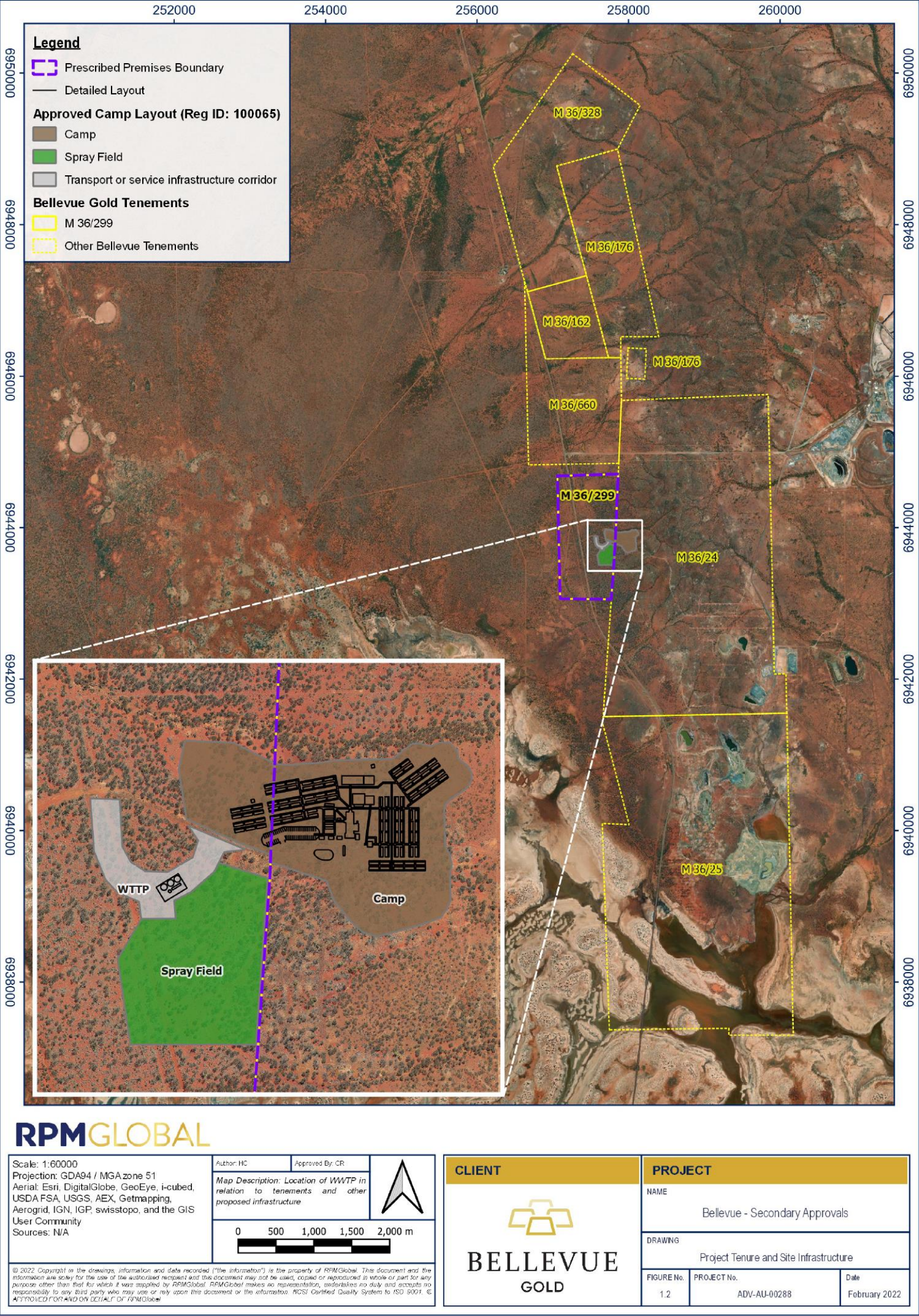


Figure 1: Map of the boundary of the prescribed premises

Schedule 2: Spray field boundary

The spray field boundary is defined by the coordinates in Table 10.

Table 10: Spray field boundary coordinates (GDA 1994)

| Eastings | Northings |
|------------|------------|
| 120.54613 | -27.608486 |
| 120.545375 | -27.608261 |
| 120.545302 | -27.608384 |
| 120.544931 | -27.608661 |
| 120.544664 | -27.608778 |
| 120.544686 | -27.609026 |
| 120.544148 | -27.60902 |
| 120.543764 | -27.609575 |
| 120.543939 | -27.610762 |
| 120.545894 | -27.610796 |