



Licence number	L9254/2020/1
Licence holder	Westpork Pty Ltd
ACN	009 148 789
Registered business address	Westpork Pty Ltd 1/7 Foundry Street, Maylands, WA 6051
DWER file number	DER2020/000272
Duration	26/11/2020 to 25/11/2040
Date of amendment	12/09/2022
Premises details	Westpork Kojonup Legal description - Lot 10 on Plan 23562 Certificate of Title Volume 2173 Folio 889 30 Crapella Road BOSCABEL WA 6394

Prescribed premises category description (Schedule 1, <i>Environmental Protection Regulations 1987</i>)	Assessed design capacity
Category 2: Intensive Piggery – Premises on which pigs are fed, watered and housed in pens.	27,360 animals (28,368 SPU)

This licence is granted to the licence holder, subject to the attached conditions, on 12 September 2022, by:

Manager, Process Industries

an officer delegated under section 20 of the *Environmental Protection Act 1986* (WA)

Licence history

Date	Reference number	Summary of changes
28 September 2015	W5865/2015/1	Works Approval Issued
17 May 2019	W5865/2015/1	Transfer of Works Approval from G D Pork Pty Ltd to Westpork Pty Ltd
23 September 2019	Amendment notice 1 - W5865/2015/1	Works Approval extended by 12 months to allow AD plant commissioning.
3 October 2019	W6268/2019/1	Works approval issued for additional wastewater treatment works.
10 June 2020	W5865/2015/1	Works Approval extended to allow operations and submission and assessment of Licence application
26 November 2020	L9254/2020/1	Licence issued
12 September 2022	L9254/2020/1	Licence Amendment application to change cleaning regime for weaner and finishing sheds (conventional sheds), including CEO initiated administrative amendments to update the format and appearance of the licence, revision of conditions and condition numbers, removal of redundant conditions, and correction of clerical or unintentional errors.

Interpretation

In this licence:

- (a) the words ‘including’, ‘includes’ and ‘include’ in conditions mean “including but not limited to”, and similar, as appropriate;
- (b) where any word or phrase is given a defined meaning, any other part of speech or other grammatical form of that word or phrase has a corresponding meaning;
- (c) where tables are used in a condition, each row in a table constitutes a separate condition;
- (d) any reference to an Australian or other standard, guideline, or code of practice in this licence:
 - (i) if dated, refers to that particular version; and
 - (ii) if not dated, refers to the latest version and therefore may be subject to change over time.
- (e) unless specified otherwise, any reference to a section of an Act refers to that section of the EP Act; and
- (f) unless specified otherwise, all definitions are in accordance with the EP Act.

NOTE: This licence requires specific conditions to be met but does not provide any implied authorisation for other emissions, discharges, or activities not specified in this licence.

Licence conditions

The licence holder must ensure that the following conditions are complied with:

Infrastructure and equipment

- The licence holder must ensure that the site infrastructure and equipment listed in Table 1 of this condition and located at the corresponding infrastructure location is maintained and operated in accordance with the corresponding operational requirement set out in Table 1.

Table 1: Infrastructure and operational requirements

Item	Site infrastructure and equipment	Operational requirement	Infrastructure location
1	Six weaner sheds and eight finisher sheds (conventional sheds), with: <ul style="list-style-type: none"> • Slatted floors • Under floor pull plug effluent system • Automated ventilation system • Drains that lead to the effluent tank 	<ol style="list-style-type: none"> Clean each weaner shed at least once every six weeks; Clean each finisher shed at least every eight weeks; Empty under floor pull-plug effluent pits in all sheds at least every seven days; Direct all effluent to the effluent tank; Remove pig carcasses (mortalities) from the sheds daily; and Pig carcasses must be either processed in the anaerobic digester plant or composted within composting bunkers. 	Schedule 1: Premises map – Weaner sheds and Finisher sheds
2	36 naturally ventilated eco-shelters (each 25 x 12 m) with: <ul style="list-style-type: none"> • Concrete floors and side walls • Hooped metal frame covered by waterproof plastic • Top mounted curtains on west end of shelters • Two load out shelters 	<ol style="list-style-type: none"> Change bedding no less than every 8 weeks per shed and record the date that the change in bedding is undertaken; Spent bedding must be processed by the anaerobic digester plant or stored on the dry manure pad prior to off-site removal; No more than 600 m³ of spent bedding shall be held on the premises at one time; Remove pig carcasses (mortalities) from the sheds daily; and Pig carcasses must be either processed in the anaerobic digester plant or composted within composting bunkers. 	Schedule 1: Premises map – Eco shelters
3	Three concrete composting bunkers consisting of three concrete walls and a concrete base	<ol style="list-style-type: none"> Maintained to ensure that there are no visible cracks in the base; Hydraulic conductivity of base maintained at or less than 1x10⁻⁹ m/s; Managed so that stormwater does not enter the bunkers and leachate does not discharge from the bunkers; and Pig carcasses must be composted by placing them on a base of 300 mm of dry organic material and covering them with 300 mm of 	Schedule 1: Premises map – composting bunkers

Item	Site infrastructure and equipment	Operational requirement	Infrastructure location
		dry organic material and left to compost for a minimum of three months.	
4	Naturally ventilated dispatch shed with: <ul style="list-style-type: none"> • Slatted floors • Underfloor pull plug system • Concrete-lined drainage system leading to anaerobic digestion feed tank 	a) Effluent must be drained to the anaerobic digester.	Schedule 1: Premises map – Dispatch shed
5	90 m ³ concrete-lined effluent tank with transfer pump and high level float switch	a) Float switch pump must activate when the effluent level is 300 mm from the top of the sump.	Schedule 1: Premises map – Effluent tank and transfer pump
6	Fully enclosed anaerobic digester plant with the following specifications: <ul style="list-style-type: none"> • Stainless steel construction • Heated • Insulated 	a) Capable of reducing volatile solids concentration of influent by 70%; b) Maintain a hydraulic retention time of at least 24 days; c) Digestate produced by the anaerobic digester must be directed to screw press; and d) Bio-gas produced by the anaerobic digester plant must be either: <ul style="list-style-type: none"> i) combusted in the gas generator; or ii) combusted by the flare. 	Schedule 1: Premises map – Anaerobic Digester
7	Screw press (fan separator): with concrete solids storage pad	a) Capable of removing 25 per cent of solids from digestate; b) Solids to be discharged to the screened solids storage pad; and c) Solids generated by the screw press must be stored on either: d) the screw press solids storage pad; or e) the dry manure storage pad prior to removal from the premises.	Schedule 1: Premises map – Screw press
8	Three sludge drying beds with the following specifications: <ul style="list-style-type: none"> • 80m long by 12 wide by 3 m deep • 1:2 side slopes • capacity of 1,333 m³ 	a) Liner hydraulic conductivity maintained at or less than $<1 \times 10^{-9}$ m/s	Schedule 1: Premises map – Drying beds
9	Anaerobic pond with the following	a) Liner hydraulic conductivity maintained at or	Schedule 1: Premises map

Item	Site infrastructure and equipment	Operational requirement	Infrastructure location
	specifications: • 80 long by 53 m wide by 5 m deep with 1:2:5 side slope • HDPE liner • 13,929 m ³ volume	less than $<1 \times 10^{-9}$ m/s; and b) Wastewater from anaerobic pond must be directed to evaporation pond 1 or evaporation pond 2 for evaporation.	– Anaerobic pond
10	Concrete dry manure pad with a 200 m concrete bund around the entire perimeter. Dry manure pad graded to direct liquid waste to concrete lined sump.	a) Waste to be pumped from sump to AD Feed Tank; b) Dry manure pad hardstand areas must have bunding around the perimeter to prevent external stormwater from entering the manure pad c) Be maintained so there are no visible cracks within concrete bund or pad and hydraulic conductivity is maintained at or less than 1×10^{-9} m/s	Schedule 1: Premises map – Dry manure pad
11	Evaporation pond 1 (190 x 85 x 1.5 m deep) with: • HDPE liner • Operational volume of 14,800m ³	a) Maintain a freeboard of 0.5 m; and b) Maintained so there is no visible erosion on inner or outer embankments; and c) Hydraulic conductivity of pond liner maintained at $<1 \times 10^{-9}$ m/s	Schedule 1: Premises map – Evaporation pond 1
12	Evaporation pond 1 (165 x 120 x 1.5 m deep) with: • HDPE liner Operational volume of 18,400m ³		Schedule 1: Premises map – Evaporation pond 2
13	Gas powered generator	a) All combustion gases must be discharged through the gas generator exhaust stack.	Schedule 1: Premises map – Gas generator

Premises Operations

- The licence holder must ensure that all wastewaters from piggery operations including wash down water, by-products wastewater and contaminated run-off are directed to the wastewater treatment system.

Monitoring

3. The licence holder must monitor ambient groundwater in accordance with the requirements specified in Table 2 and record the results of all such monitoring.

Table 2: Groundwater monitoring

Monitoring Location	Parameter	Unit	Frequency	Sample	Method
KOJ1A KOJ2A KOJ3A KOJ4 KOJ5 KOJ6 KOJ7 KOJ8 As shown in Figure 1	Standing water level	mAHD mBToC mBGL	Once per 6 months with samples being taken at least 4 months apart	In-field measurement	AS 5667.1 AS 5667.11 AS 5667.4
	pH	NA			
	Total dissolved solids (TDS)	mg/L		Spot sample	
	Nitrate-nitrogen				
	Nitrite-nitrogen				
	Ammonium-nitrogen				
	Total nitrogen				
	Total phosphorus				
	Zinc				
	Arsenic				

4. With the exception of standing water level and pH, the licence holder must ensure that all analysis undertaken pursuant to condition 3 is undertaken by a holder of a current accreditation from the National Association of Testing Authorities (NATA) for the methods of analysis relevant to the corresponding parameter.
5. The licence holder must monitor and record the number of pigs on the premises as set out in Table 3.

Table 3: Pig numbers on the premises

Parameter	Unit	Time period
Maximum number of pigs held on the premises	Animal numbers and SPU	Each month
Pigs received at the premises		
Pigs taken off the premises		
Pig carcasses processed		

Records and reporting

6. The licence holder must record the following information in relation to complaints received by the licence holder (whether received directly from a complainant or

forwarded to them by the Department or another party) about any alleged emissions from the premises:

- (a) the name and contact details of the complainant, (if provided);
 - (b) the time and date of the complaint;
 - (c) the complete details of the complaint and any other concerns or other issues raised; and
 - (d) the complete details and dates of any action taken by the licence holder to investigate or respond to any complaint.
- 7.** The licence holder must:
- (a) undertake an audit of their compliance with the conditions of this licence during the preceding annual period; and
 - (b) prepare and submit to the CEO by no later than 60 days after the end of that annual period an Annual Audit Compliance Report in the approved form.
- 8.** The licence holder must maintain accurate and auditable books including the following records, information, reports, and data required by this licence:
- (a) the calculation of fees payable in respect of this licence;
 - (b) any maintenance of infrastructure that is performed in the course of complying with condition 1 of this licence;
 - (c) monitoring programmes undertaken in accordance with condition 3 of this licence; and
 - (d) complaints received under condition 6 of this licence.
- 9.** The books specified under condition 8 must:
- (a) be legible;
 - (b) if amended, be amended in such a way that the original version(s) and any subsequent amendments remain legible and are capable of retrieval;
 - (c) be retained by the licence holder for the duration of the licence; and
 - (d) be available to be produced to an inspector or the CEO as required.
- 10.** The licence holder must submit to the CEO by no later than 60 days after the end of each annual period, an Annual Environmental Report for that annual period for the conditions listed in Table 4, and which provides information in accordance with the corresponding requirement set out in Table 4.

Table 4: Annual Environmental Report

Condition	Requirement
1, Table 1	Tabulated record of the cleaning schedule (replacement of bedding) in the eco-shelters, including the date each eco-shelter was cleaned.
3, Table 2	Tabulated groundwater monitoring data results and time series graphs for each monitoring well showing concentrations of all parameters over a 4 year period.
5, Table 3	Tabulated monthly pig numbers on the premises, pigs received, pigs removed and carcasses in animal numbers and SPU

Definitions

In this licence, the terms in Table 5 have the meanings defined.

Table 5: Definitions

Term	Definition
ACN	Australian Company Number
Annual Audit Compliance Report (AACR)	means a report submitted in a format approved by the CEO (relevant guidelines and templates may be available on the Department's website).
annual period	a 12 month period commencing from 1 January until 31 December of the same year.
CEO	means Chief Executive Officer of the Department. "submit to / notify the CEO" (or similar), means either: Director General Department administering the <i>Environmental Protection Act 1986</i> Locked Bag 10 Joondalup DC WA 6919 or: info@dwer.wa.gov.au
Clean/cleaning	In the context of weaner and finisher sheds, cleaning comprises the high pressure washing of the slatted floor and penning to remove accumulated waste and uneaten feed, followed by the application of a disinfectant.
Department	means the department established under section 35 of the <i>Public Sector Management Act 1994</i> (WA) and designated as responsible for the administration of the EP Act, which includes Part V Division 3.
EP Act	<i>Environmental Protection Act 1986</i> (WA)
EP Regulations	<i>Environmental Protection Regulations 1987</i> (WA)
licence	refers to this document, which evidences the grant of a licence by the CEO under section 57 of the EP Act, subject to the specified conditions contained within.
licence holder	refers to the occupier of the premises, being the person specified on the front of the licence as the person to whom this licence has been granted.
premises	refers to the premises to which this licence applies, as specified at the front of this licence and as shown on the premises map (Figure 1) in Schedule 1 to this licence.
SPU	means standard pig units, as defined in the <i>National Environmental Guidelines for Indoor Piggeries</i> , Australian Pork Limited, 2018
Wastewater treatment system	means the feed tank for the anaerobic digester, screw press, anaerobic pond, sludge drying beds and evaporation ponds.

END OF CONDITIONS

Schedule 1: Maps

Premises map

The boundary and layout of the prescribed premises is shown in the map below (Figure 1).

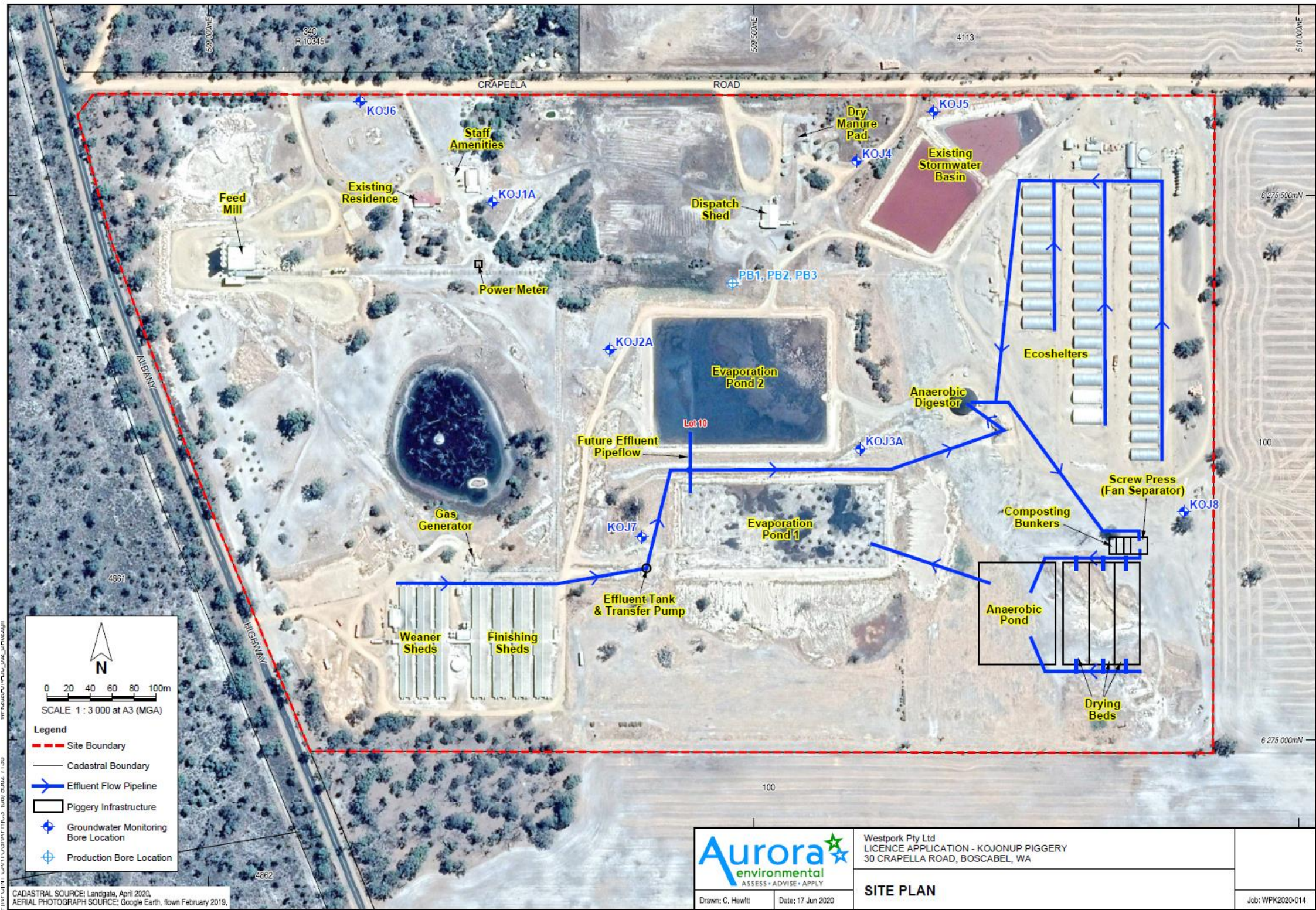


Figure 1: Map of the boundary of the prescribed premises (taken from licence application Aurora 2020)