



Works approval number	W6656/2022/1
Works approval holder	Kimberley Quarry Pty Ltd
ACN	093 519 638
Registered business address	230 Barrington Street BIBRA LAKE WA 614
DWER file number	DER2021/000705
Duration	07/09/2022 to 06/09/2025
Date of issue	07/09/2022
Premises details	Walkaway Sand and Limestone Pits Certificate of Title Volume 1019 Folio 566 Certificate of Title Volume 1029 Folio 923 Certificate of Title Volume 1289 Folio 456 WALKAWAY WA 6528 As defined by the premises map in Schedule 1 and coordinates in Schedule 2

Prescribed premises category description (Schedule 1, <i>Environmental Protection Regulations 1987</i>)	Assessed production / design capacity
Category 70: Screening etc. of material	20,000 tonnes per annum for sand 20,000 tonnes per annum for limestone

This works approval is granted to the works approval holder, subject to the attached conditions, on 7 September 2022, by:

**A/Manager, Resource Industries
REGULATORY SERVICES**

an officer delegated under section 20 of the *Environmental Protection Act 1986* (WA)

Works approval history

Date	Reference number	Summary of changes
07/09/2022	W6656/2022/1	Works approval granted.

Interpretation

In this works approval:

- (a) the words 'including', 'includes' and 'include' in conditions mean "including but not limited to", and similar, as appropriate;
- (b) where any word or phrase is given a defined meaning, any other part of speech or other grammatical form of that word or phrase has a corresponding meaning;
- (c) where tables are used in a condition, each row in a table constitutes a separate condition;
- (d) any reference to an Australian or other standard, guideline, or code of practice in this works approval:
 - (i) if dated, refers to that particular version; and
 - (ii) if not dated, refers to the latest version and therefore may be subject to change over time;
- (e) unless specified otherwise, any reference to a section of an Act refers to that section of the EP Act; and
- (f) unless specified otherwise, all definitions are in accordance with the EP Act.

NOTE: This works approval requires specific conditions to be met but does not provide any implied authorisation for other emissions, discharges, or activities not specified in this works approval.

Works approval conditions

The works approval holder must ensure that the following conditions are complied with:

Construction phase

Infrastructure and equipment

1. The works approval holder must construct and/or install the infrastructure and/or equipment at the corresponding infrastructure location as set out in Table 1.

Table 1: Design and construction / installation requirements

	Infrastructure and equipment	Design and construction / installation requirements	Infrastructure location
1.	1 x mobile crushing and screening plant	<ul style="list-style-type: none"> • design capacity of 20,000 tonnes per annum for sand • design capacity of 20,000 tonnes per annum for limestone • crushing and screening plant to consist of, but not limited to the following: <ul style="list-style-type: none"> - impact crusher (track mounted) - stacker (track mounted conveyor) • mobile plant will be fitted with dust extraction, shielding or filtration systems • mist spray reticulation will be fitted on the mobile plant • noise attenuation technology (including but not limited to efficient mufflers, noise shielding, and warning lights) will be fitted to the mobile plant • installed as per the manufacturer's specifications 	Schedule 1: Figure 1 and Schedule 2: Tables 4 and 5 The mobile plant will be located within the processing area as shown in Figures 2 and 3
2.	Associated equipment such as: 1 x service truck 1 x excavator (Komatsu PC45 or similar type) 1 x front end loader (Komatsu WA 500 to WA600 or similar type) 1 x water tanker 1 x crane dust suppression units	<ul style="list-style-type: none"> • associated equipment to be fitted with noise attenuation technology (including but not limited to efficient mufflers, noise shielding, and warning lights) 	

Compliance reporting

2. The works approval holder must within 30 calendar days of an item of infrastructure or equipment required by condition 1 being constructed and/or installed:
 - (a) undertake an audit of their compliance with the requirements of condition 1; and
 - (b) prepare and submit to the CEO an Environmental Compliance Report on that compliance.
3. The Environmental Compliance Report required by condition 2, must include as a minimum the following:
 - (a) certification by the works approval holder that the items of infrastructure or component(s) thereof, as specified in condition 1, have been constructed in accordance with the relevant requirements specified in condition 1;
 - (b) as constructed plans and a detailed site plan for each item of infrastructure or component of infrastructure specified in condition 1;
 - (c) where the manufacturer's design specifications and the conditions of this works approval have not been met, what measures will the works approval holder take to meet them, and what timeframes will be required to implement those measures; and
 - (d) be signed by a person authorised to represent the works approval holder and contains the printed name and position of that person.

Time limited operations phase

Commencement and duration

4. The works approval holder may only commence time limited operations for an item of infrastructure identified in condition 1 where the Environment Compliance Report as required by condition 3 has been submitted by the works approval holder for the item of infrastructure.
5. The works approval holder may conduct time limited operations for an item of infrastructure specified in condition 6 (as applicable):
 - (a) for a period not exceeding 180 calendar days from the day the works approval holder meets the requirements of condition 6 for that item of infrastructure; or
 - (b) until such time as a licence for that item of infrastructure is granted in accordance with Part V of the *Environmental Protection Act 1986*, if one is granted before the end of the period specified in condition 5(a).

Time limited operations requirements

6. During time limited operations, the works approval holder must ensure that the premises infrastructure and equipment listed in Table 2 and located at the corresponding infrastructure location is maintained and operated in accordance with the corresponding operational requirement set out in Table 2.

Table 2: Infrastructure and equipment requirements during time limited operations

	Infrastructure and equipment	Operational requirement	Infrastructure location
1.	1 x mobile crushing and screening plant	<p><u>General:</u></p> <ul style="list-style-type: none"> • crushing and screening plant operated as per the manufacturer’s specifications <p><u>Dust Controls:</u></p>	Schedule 1: Figure 1 and
2.	Associated equipment 1 x service truck 1 x excavator (Komatsu PC45 or similar type) 1 x front end loader (Komatsu WA 500 to WA600 or similar to type) 1 x water tanker	<ul style="list-style-type: none"> • 400 m buffer maintained from sensitive receptors • crushing and screening activities occur behind natural barriers, landform, and vegetation such as: <ul style="list-style-type: none"> – overburden dumps used as wind screening barriers; – existing landscape used as screening, wind breaks, and tree belts; and – trees planted to form screening barriers • dust generating activities to cease until conditions improve, for example where water supply breakdown or during strong winds that negate the effect of dust management • excavation of limestone conducted in campaigns during Winter (where possible) • mobile crusher and stockpiles situated at locations for the mitigation of dust and other potential impacts • coarser products placed around fine materials to assist in wind protection and dust suppression of the finer products • drop heights limited from conveyors and dump trucks • dust extraction, shielding or filtration systems operated and maintained on the mobile plant • mist spray reticulation operated and maintained on the mobile plant • dust suppression units (Polo Citrus) operated during crushing and screening plant activities • water tanker using a spray bar delivery system and boom sprinklers maintained on site during operation • stockpiles wet down using a water cart to minimize dust lift off • stockpiles no greater than 4 m in height <p><u>Noise Controls:</u></p> <ul style="list-style-type: none"> • 400 m buffer maintained from sensitive receptors • crushing and screening activities occur behind natural barriers, landform, and vegetation such as: <ul style="list-style-type: none"> – overburden dumps used as noise screening 	Schedule 2: Tables 4 and 5 The mobile plant will be located within the processing area as shown in Figures 2 and 3

	Infrastructure and equipment	Operational requirement	Infrastructure location
		<p>barriers;</p> <ul style="list-style-type: none"> - existing landscape used as screening, wind breaks, and tree belts; and - trees planted form screening barriers <ul style="list-style-type: none"> • the crest from the limestone pit maintained to act as noise bund • noise attenuation technology (including but not limited to efficient mufflers, noise shielding, and warning lights) will be operated and maintained on the mobile machinery / equipment • mobile plant maintained in good condition and will be shut down when not in operation • hardstand surfaces maintained in good condition with suitable grades and speed limits in place <p><u>Discharge of Sediment Laden and/or Stormwater Controls:</u></p> <ul style="list-style-type: none"> • stormwater to be diverted around the premises and away from the processing and stockpile areas, directed into the sump in the pit to allow wastewater to soak away in porous sand • potentially contaminated stormwater to be retained on premises and diverted to a sump in the pit 	

Compliance reporting

7. The works approval holder must submit to the CEO a report on the time limited operations within 60 calendar days of the completion date of time limited operations or 60 calendar days before the expiration date of the works approval, whichever is the sooner.
8. The works approval holder must ensure the report required by condition 7 includes the following:
 - (a) a summary of the time limited operations, including timeframes; and
 - (b) a summary of the environmental performance of all infrastructure as constructed or installed (as applicable), which includes records detailing the:
 - (i) amount of sand processed; and
 - (ii) amount of limestone processed.

Emissions

9. The works approval holder must ensure operating hours occur between 7:00am to 5:00pm, Monday to Saturday, excluding public holidays and Sunday where clean up and maintenance occurs.
10. The works approval holder must ensure that no visible dust generated from the primary activities crosses the boundary of the premises.

Records and reporting (general)

- 11.** The works approval holder must record the following information in relation to complaints received by the works approval holder (whether received directly from a complainant or forwarded to them by the Department or another party) about any alleged emissions and discharges from the premises:

 - (a) the name and contact details of the complainant, (if provided);
 - (b) the time and date of the complaint;
 - (c) the complete details of the complaint and any other concerns or other issues raised; and
 - (d) the complete details and dates of any action taken by the works approval holder to investigate or respond to any complaint.

- 12.** The works approval holder must maintain accurate and auditable books including the following records, information, reports, and data required by this works approval:

 - (a) the works conducted in accordance with condition 1;
 - (b) any maintenance of infrastructure that is performed in the course of complying with condition 1 and 6; and
 - (c) complaints received under condition 11.

- 13.** The books specified under condition 12 must:

 - (a) be legible;
 - (b) if amended, be amended in such a way that the original version(s) and any subsequent amendments remain legible and are capable of retrieval;
 - (c) be retained by the works approval holder for the duration of the works approval; and
 - (d) be available to be produced to an inspector or the CEO as required.

Definitions

In this works approval, the terms in Table 3 have the meanings defined.

Table 3: Definitions

Term	Definition
books	has the same meaning given to that term under the EP Act.
CEO	means Chief Executive Officer. CEO for the purposes of notification means: Director General Department administering the <i>Environmental Protection Act 1986</i> Locked Bag 10 Joondalup DC WA 6919 info@dwer.wa.gov.au
Department	means the department established under section 35 of the <i>Public Sector Management Act 1994</i> and designated as responsible for the administration of Part V Division 3 of the EP Act.
discharge	has the same meaning given to that term under the EP Act.
emission	has the same meaning given to that term under the EP Act.
environmental commissioning	means the sequence of activities to be undertaken to test equipment integrity and operation, or to determine the environmental performance, of equipment and infrastructure to establish or test a steady state operation and confirm design specifications.
Environmental Commissioning Report	means a report on any commissioning activities that have taken place and a demonstration that they have concluded, with focus on emissions and discharges, waste containment, and other environmental factors.
Environmental Compliance Report	means a report to satisfy the CEO that the conditioned infrastructure and/or equipment has been constructed and/or installed in accordance with the works approval.
EP Act	<i>Environmental Protection Act 1986 (WA)</i> .
EP Regulations	<i>Environmental Protection Regulations 1987 (WA)</i> .
premises	the premises to which this licence applies, as specified at the front of this licence and as shown on the premises map (Figure 1) in Schedule 1 to this works approval.
prescribed premises	has the same meaning given to that term under the EP Act.

Term	Definition
primary activities	refers to the prescribed premises activities listed on the front of the works approval at the locations shown in Schedule 1 and coordinates defined in Schedule 2.
time limited operations	refers to the operation of the infrastructure and equipment identified under this works approval that is authorised for that purpose, subject to the relevant conditions.
waste	has the same meaning given to that term under the EP Act.
works approval	refers to this document, which evidences the grant of the works approval by the CEO under section 54 of the EP Act, subject to the conditions.
works approval holder	refers to the occupier of the premises being the person to whom this works approval has been granted, as specified at the front of this works approval.

END OF CONDITIONS

Schedule 1: Maps

Premises map

The boundary of the prescribed premises is shown in the map below (Figure 1).

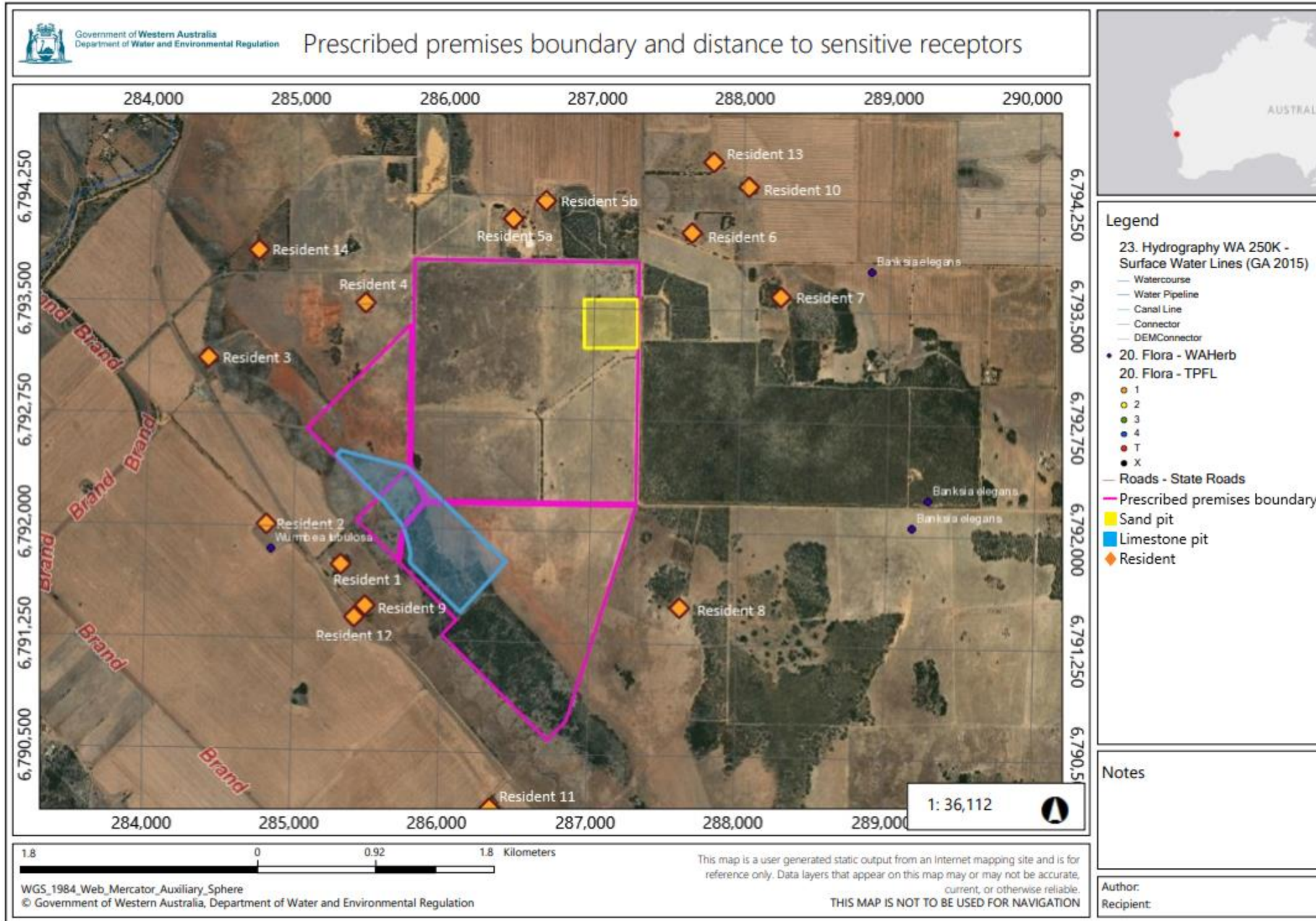


Figure 1: Map of the boundary of the prescribed premises

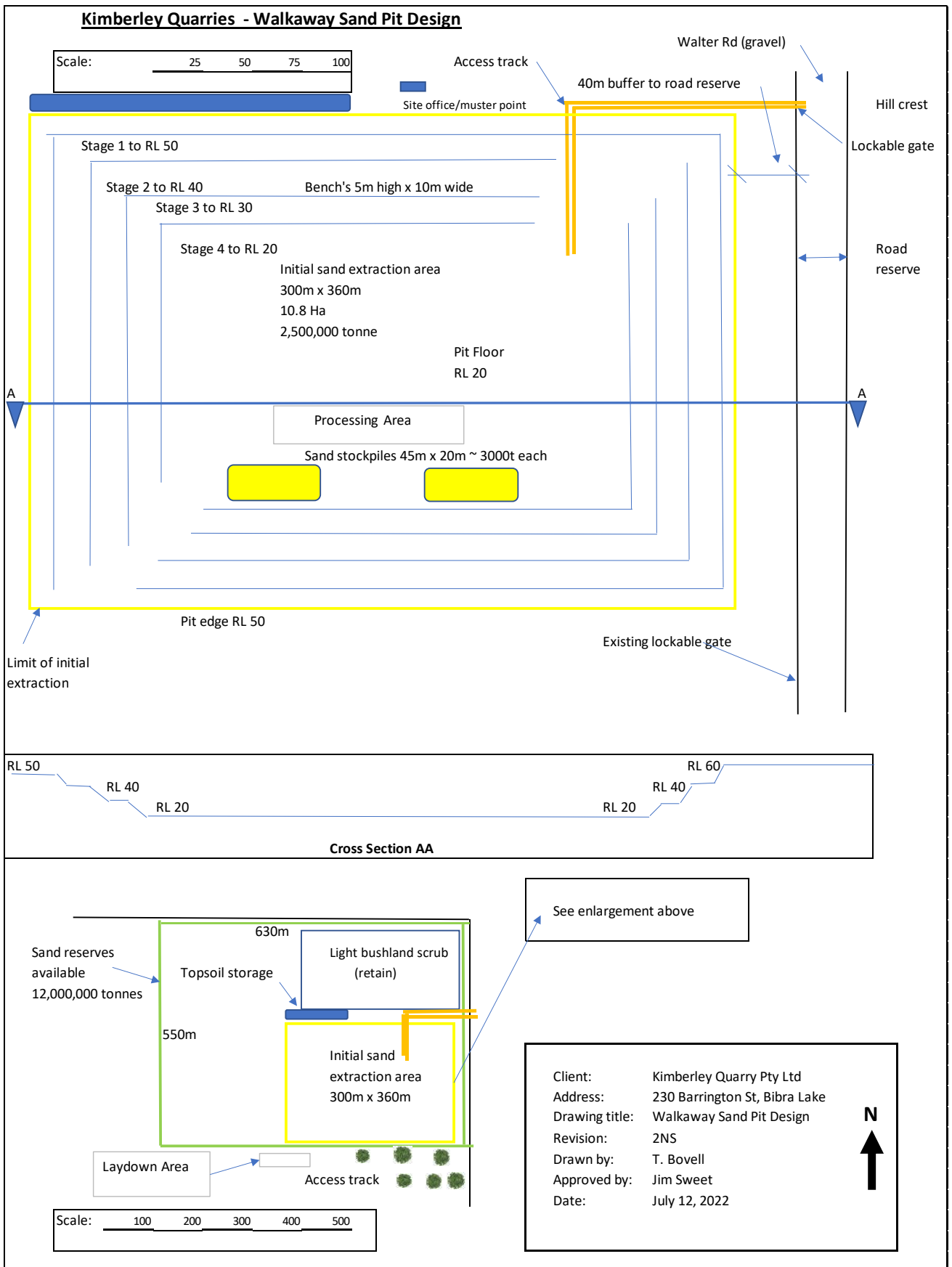


Figure 2: Sand pit layout

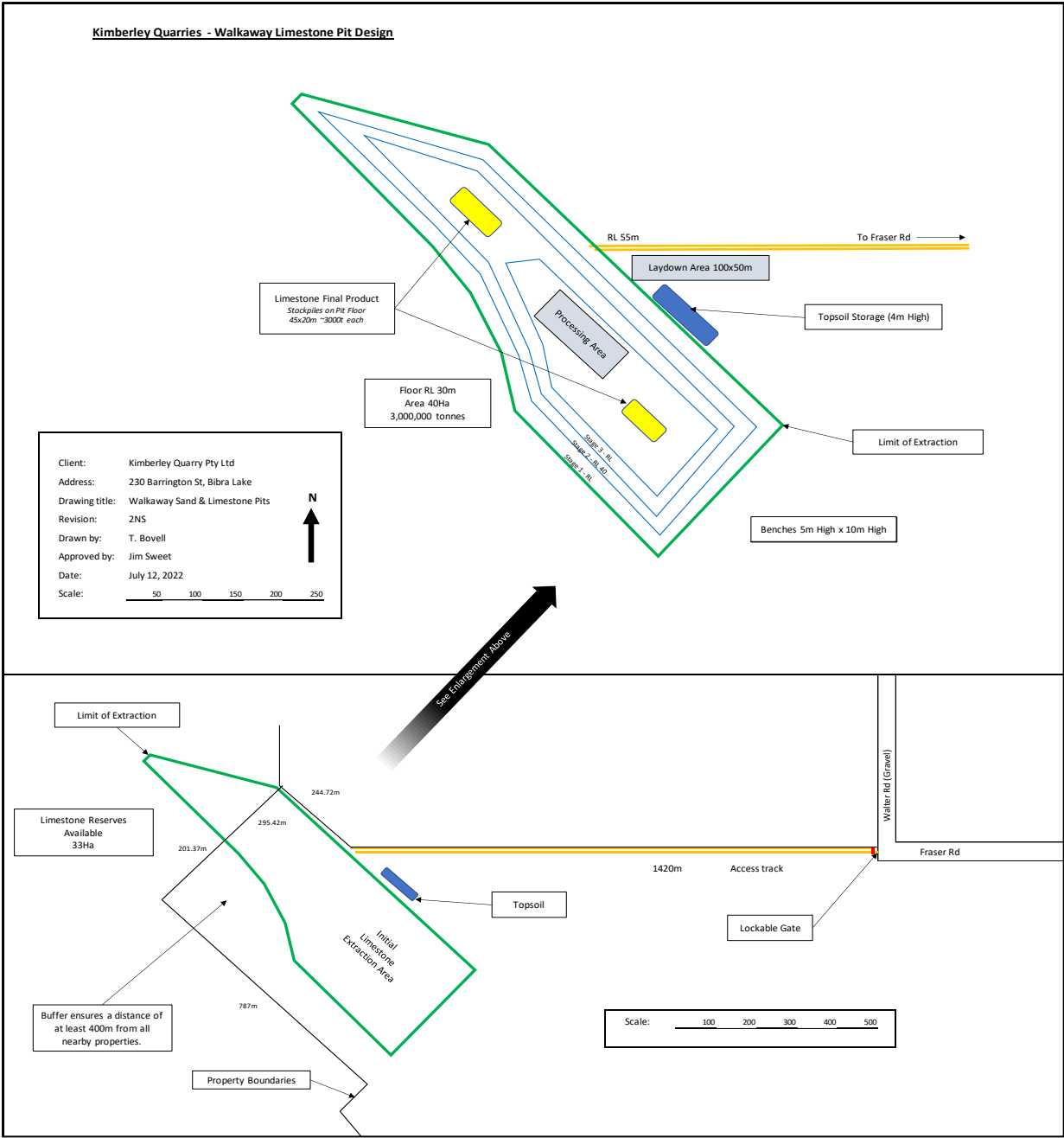


Figure 3: Limestone pit layout

Schedule 2: Sand and limestone pit boundaries

The sand and limestone pit boundaries are defined by the coordinates in Table 4 and Table 5.

Table 4: Sand pit boundary coordinates (GDA94 / MGA zone 50 (WKID 28350))

Easting	Northing
287299	6793236
286927	6793235
286924	6793549
287301	6793552

Table 5: Limestone pit boundary coordinates (GDA94 / MGA zone 50 (WKID 28350))

Easting	Northing
286424	6791733
286147	6791435
285814	6791762
285805	6791795
285794	6791844
285772	6791909
285752	6791957
285723	6792012
285687	6792071
285615	6792150
285559	6792197
285266	6792480
285294	6792503
285744	6792382