



Works approval number	W6663/2022/1
Works approval holder	Hanson Construction Materials Pty Ltd
ACN	009 679 734
Registered business address	Level 10, 35 Clarence Street SYDNEY NSW 2000
DWER file number	DER2021/000597
Duration	14/07/2022 to 13/07/2025
Date of issue	13/07/2022
Premises details	Mt Barker Quarry 101 Pellew Road KENDENUP WA 6323 Legal description – Lots 947 & 948 on Plan 4694 As shown in the premises map in Schedule 1

Prescribed premises category description (Schedule 1, Environmental Protection Regulations 1987)	Assessed production capacity
Category 77: Concrete batching or cement products manufacturing: premises on which cement products or concrete are manufactured for use at places or premises other than those premises.	20,000 tonnes per annual period

This works approval is granted to the works approval holder, subject to the attached conditions, on 13/07/2022, by:

Daniel Hartnup

**A/MANAGER, PROCESS INDUSTRIES
REGULATORY SERVICES**

an officer delegated under section 20 of the *Environmental Protection Act 1986* (WA)

Works approval history

Date	Reference number	Summary of changes
13/07/2022	W6663/2022/1	Works approval granted

Interpretation

In this works approval:

- (a) the words 'including', 'includes' and 'include' in conditions mean 'including but not limited to', and similar, as appropriate;
- (b) where any word or phrase is given a defined meaning, any other part of speech or other grammatical form of that word or phrase has a corresponding meaning;
- (c) where tables are used in a condition, each row in a table constitutes a separate condition;
- (d) any reference to an Australian or other standard, guideline or code of practice in this works approval:
 - (i) if dated, refers to that particular version; and
 - (ii) if not dated, refers to the latest version and therefore may be subject to change over time;
- (e) unless specified otherwise, any reference to a section of an Act refers to that section of the EP Act; and
- (f) unless specified otherwise, all definitions are in accordance with the EP Act.

NOTE: This works approval requires specific conditions to be met but does not provide any implied authorisation for other emissions, discharges, or activities not specified in this works approval.

Works approval conditions

The works approval holder must ensure that the following conditions are complied with:

Construction phase

Infrastructure and equipment

1. The works approval holder must:
 - (a) construct the infrastructure;
 - (b) in accordance with the corresponding design and construction requirements; and
 - (c) at the corresponding infrastructure location,as set out in Table 1.

Table 1: Design and construction requirements

	Infrastructure	Design and construction requirements	Infrastructure location
1.	100 tonne cement silo	Cement silo must be fitted with: <ul style="list-style-type: none">a relief valve which is piped to a weigh hopper or outlet within one metre of the ground to prevent overfilling;a level indicator with an audible high level alarm which sounds if cement reaches 0.6 m below the inlet to the silo's air cleaning system;a test circuit which indicates whether the level indicator and alarm are operating correctly;	Silo in Schedule 1 Figure 3

	Infrastructure	Design and construction requirements	Infrastructure location
		<ul style="list-style-type: none"> a pressure differential device to detect blockages and holes in filters a reverse pulse air cleaning system which is designed to reduce dust emissions to less than 50 milligrams of particulate matter per cubic metre; and ducting which discharges air from the cement silo air cleaning system to within one metre of the ground. 	
2.	Aggregate hopper	Aggregate and sand feed hopper must be enclosed or fitted with wind shields, water sprays or a dust extraction system designed to prevent escape of visible dust.	Aggregate hopper Schedule 1 Figure 3
3.	Conveyors	Conveyors and transfer points must be enclosed	Schedule 1 Figure 3
4.	Stockpiles	Stockpiles must have sprinklers capable of wetting the whole of the stockpile.	Stockpiles Schedule 1 Figure 2
5.	Wedge pit and wash down pits	Constructed of concrete	Schedule 1 Figure 3
6.	Hardstand	Graded to ensure potentially contaminated water is captured and recycled.	Schedule 1 Figure 2
7.	Screening bund	The bund must: <ul style="list-style-type: none"> be at least 3.5 metres high surround the batching plant on the west, south and east be vegetated or otherwise treated to prevent dust lift-off. 	Schedule 1 Figure 2

Compliance reporting

2. The works approval holder must within 28 calendar days of the infrastructure specified in condition 1 being constructed:
 - (a) undertake an audit of their compliance with the requirements of condition 1; and
 - (b) prepare and submit to the CEO an Environmental Compliance Report on that compliance.
3. The Environmental Compliance Report required by condition 2, must include as a minimum:
 - (a) certification whether or not the items of infrastructure or components thereof, as specified in condition 1, have been constructed in accordance with the relevant requirements specified in condition 1;
 - (b) as constructed plans and a detailed site plan for each item of infrastructure or component of infrastructure specified in condition 1; and
 - (c) be signed by a person authorised to represent the works approval holder and contains the printed name and position of that person.
4. Subject to condition 3(a), where an item of infrastructure or component of infrastructure has been certified as not being constructed, or does not comply with the corresponding requirements, or contains material defects, the works approval holder must:

- (d) correct the non-compliant or defective works, prior to re-certifying in accordance with condition 3(a); or
- (e) provide to the CEO a description of, and explanation for, any departures from the requirements specified in Table 1 that do not require rectification and do not constitute a material defect along with the Environmental Compliance Report required by condition 2.

Records and reporting (general)

5. The works approval holder must record the following information in relation to complaints received by the works approval holder (whether directly from a complainant or forwarded to them by the department or another party) about any alleged emissions from the premises:
 - (a) the name and contact details of the complainant (if provided);
 - (a) the time and date of the complaint;
 - (b) the complete details of the complaint and any other concerns or issues raised; and
 - (c) the complete details and dates of action(s) taken by the works approval holder to investigate or respond to any complaint.
6. The works approval holder must maintain accurate and auditable books including the following records, information, reports and data required by this works approval:
 - (a) the works conducted in accordance with condition 1; and
 - (b) complaints received under condition 5.
7. The books specified under condition 6 must:
 - (a) be legible;
 - (b) if amended, be amended in such a way that the original version(s) and any subsequent amendments remain legible and are capable of retrieval;
 - (c) be retained by the works approval holder for the duration of the works approval; and
 - (d) be available to be produced to an inspector or the CEO as required.

Definitions

In this works approval, the terms in Table 2 have the meanings defined.

Table 2: Definitions

Term	Definition
books	has the same meaning given to that term under the EP Act.
CEO	means Chief Executive Officer. CEO for the purposes of notification means: Director General Department administering the <i>Environmental Protection Act 1986</i> Locked Bag 10 Joondalup DC WA 6919 info@dwer.wa.gov.au
Department	means the department established under section 35 of the <i>Public Sector Management Act 1994</i> and designated as responsible for the administration of Part V Division 3 of the EP Act.
discharge	has the same meaning given to that term under the EP Act.
emission	has the same meaning given to that term under the EP Act.
Environmental Compliance Report	means a report to satisfy the CEO that the conditioned infrastructure and equipment has been constructed or installed in accordance with the works approval.
EP Act	<i>Environmental Protection Act 1986</i> (WA).
premises	the premises to which this licence applies, as specified at the front of this licence and as shown on the premises map Figure 1 in Schedule 1 to this works approval.
prescribed premises	has the same meaning given to that term under the EP Act.
works approval	refers to this document, which evidences the grant of the works approval by the CEO under section 54 of the EP Act, subject to the conditions.
works approval holder	refers to the occupier of the premises being the person to whom this works approval has been granted, as specified at the front of this works approval.

END OF CONDITIONS

Schedule 1: Maps

The prescribed premises is shown in the map below (Figure 1). The red line depicts the premises boundary.

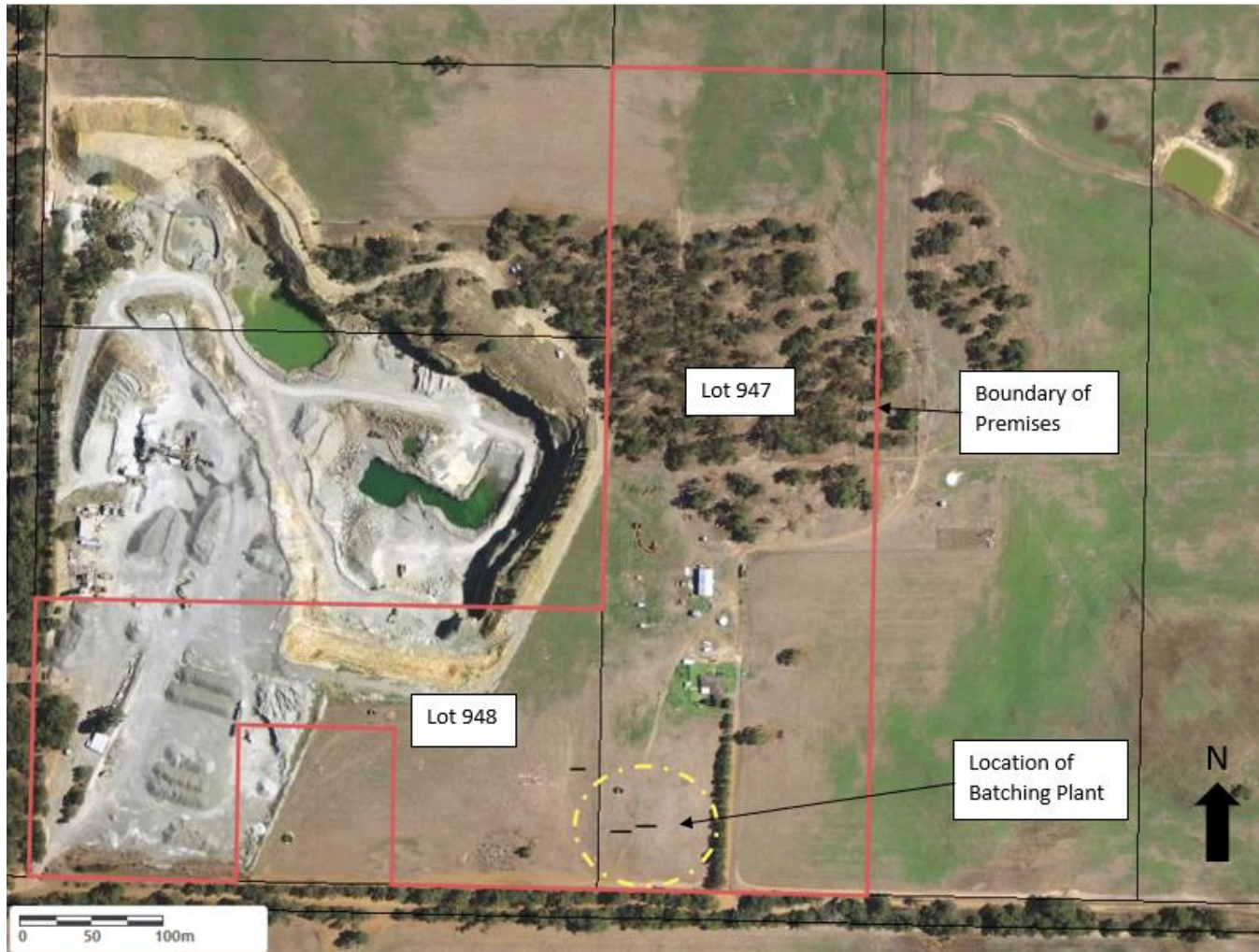


Figure 1: Map of the boundary of the prescribed premises

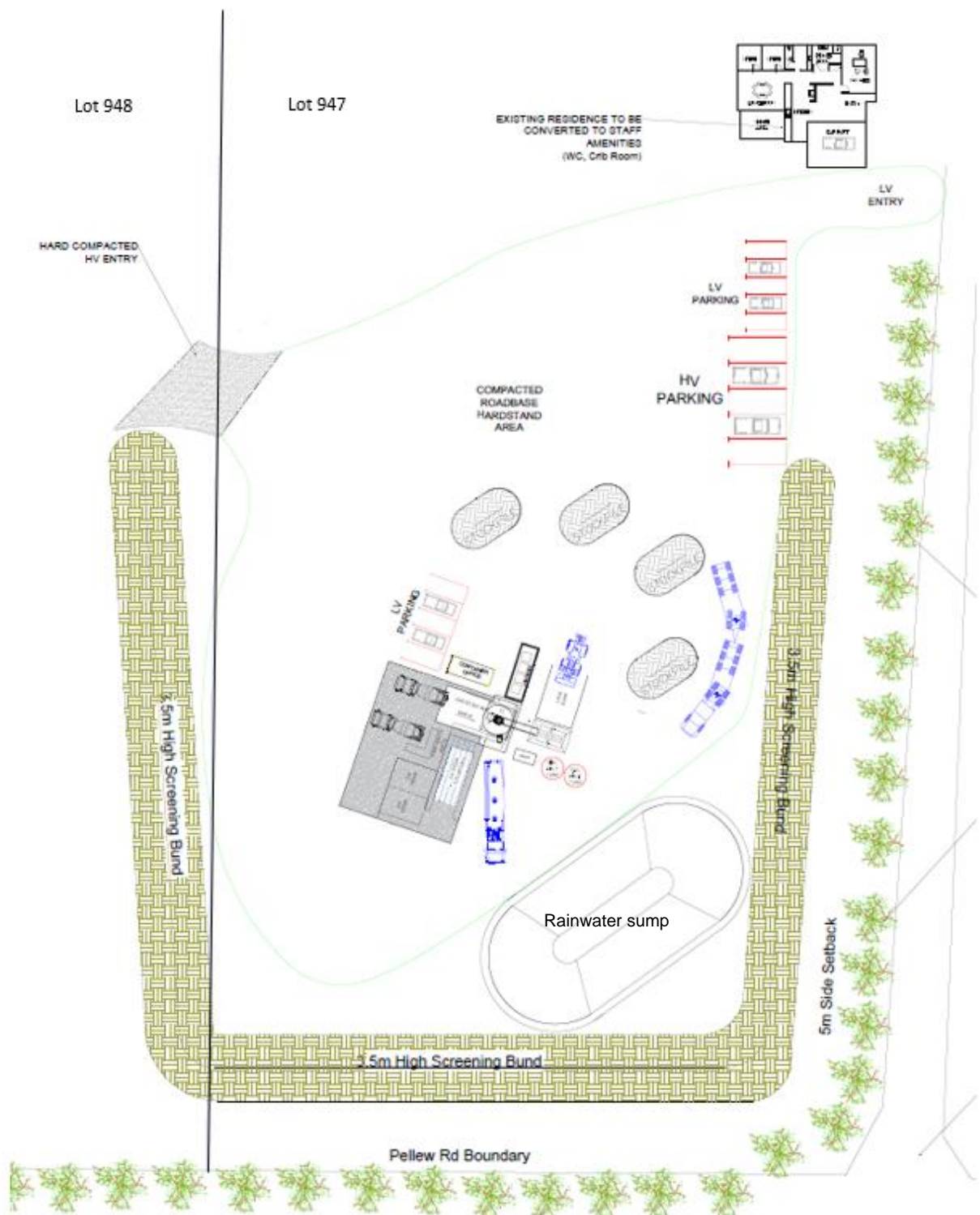


Figure 2: General plant layout

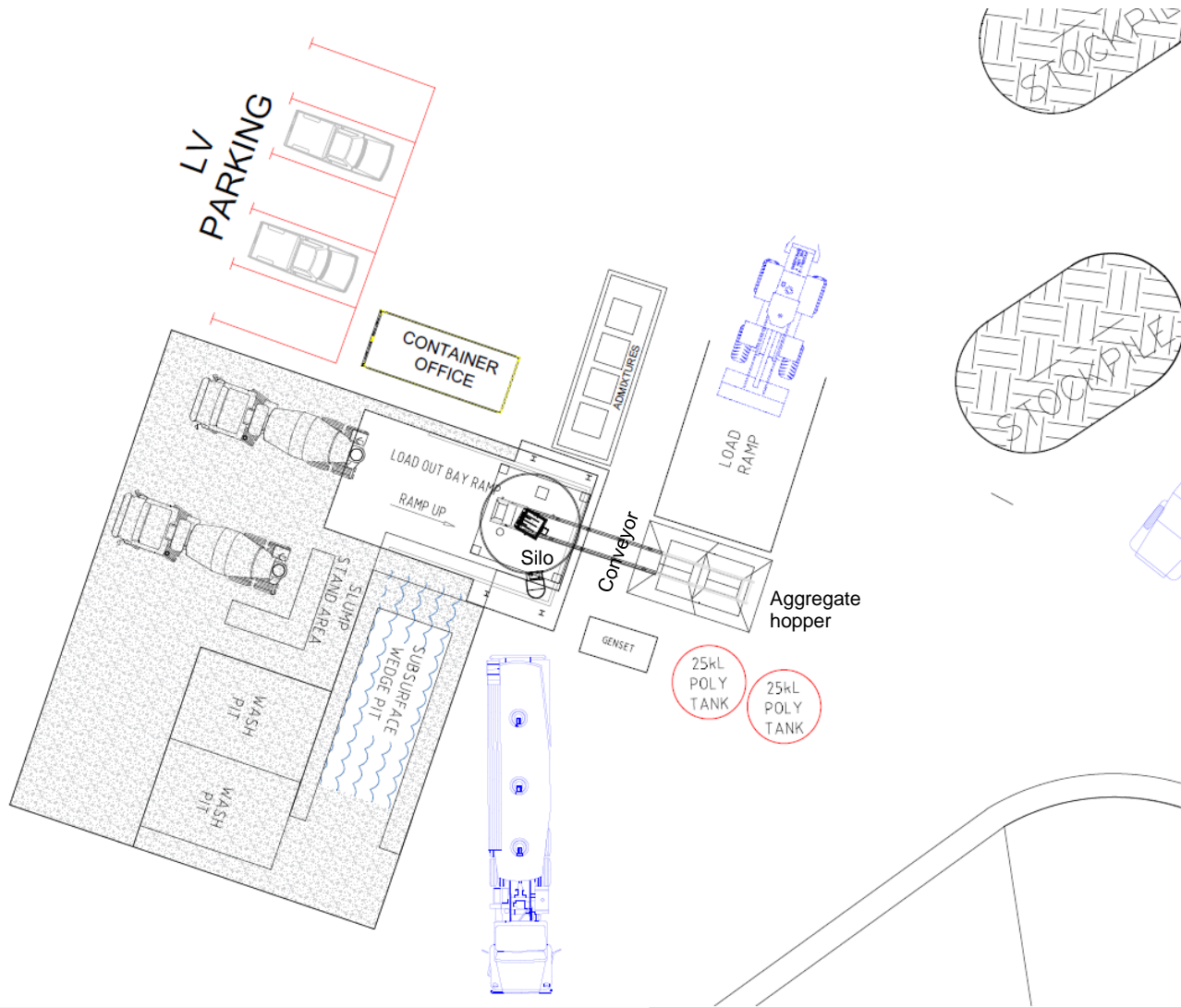


Figure 3: Detail of batching plant