



Works approval number	W6615/2021/1
Works approval holder	Wiluna Operations Pty Ltd
ACN	166 954 525
Registered business address	Level 3, 1 Altona Street WEST PERTH WA 6005
DWER file number	DER2021/000552
Duration	11/02/2022 to 10/02/2027
Date of issue	11/02/2022
Premises details	Wiluna Mine Site Wiluna, Western Australia Legal description - Mining tenements M53/30, M53/32, M53/468, M53/64, L53/62, G53/18 and G53/19 and part tenements M53/40, M53/44, M53/50, M53/26, M53/6, M53/95, M53/96, M53/200, M53/69, M53/24, as defined by the coordinates in Schedule 4.

Prescribed premises category description (Schedule 1, <i>Environmental Protection Regulations 1987</i>)	Assessed design capacity
Category 5: Processing or beneficiation of metallic or non-metallic ore	2 000 000 tonnes per year

This works approval is granted to the works approval holder, subject to the attached conditions, on 11 February 2022, by:

**A/MANAGER, RESOURCE INDUSTRIES
REGULATORY SERVICES**

an officer delegated under section 20 of the *Environmental Protection Act 1986* (WA)

Interpretation

In this works approval:

- (a) the words 'including', 'includes' and 'include' in conditions mean "including but not limited to", and similar, as appropriate;
- (b) where any word or phrase is given a defined meaning, any other part of speech or other grammatical form of that word or phrase has a corresponding meaning;
- (c) where tables are used in a condition, each row in a table constitutes a separate condition;
- (d) any reference to an Australian or other standard, guideline, or code of practice in this works approval:
 - (i) if dated, refers to that particular version; and
 - (ii) if not dated, refers to the latest version and therefore may be subject to change over time;
- (e) unless specified otherwise, any reference to a section of an Act refers to that section of the EP Act; and
- (f) unless specified otherwise, all definitions are in accordance with the EP Act.

NOTE: This works approval requires specific conditions to be met but does not provide any implied authorisation for other emissions, discharges, or activities not specified in this works approval.

Works approval conditions

The works approval holder must ensure that the following conditions are complied with:

Construction phase

Infrastructure and equipment

1. The works approval holder must:
 - (a) construct the infrastructure;
 - (b) in accordance with the corresponding design and construction requirements; and
 - (c) at the corresponding infrastructure location, as set out in Table 1.

Table 1: Design and construction requirements

	Infrastructure	Design and construction / installation requirements	Infrastructure location
1.	<p>Wiltails plant – comprises:</p> <ul style="list-style-type: none"> Belt feeder – plant feed point Conveyor belt Scrubber and Trommel, including: <ul style="list-style-type: none"> Scrubber feed hopper Drum scrubber Scrubber discharge hopper, including Warman pump system, scats chute and scats bin Trash Screen, including track-mounted grizzly scalping screen 	<ul style="list-style-type: none"> Water sprays at transfer point where dry tailings are loaded into the plant Scrubber, trommel and trash screen situated within a concrete bund constructed with sufficient capacity for failure of the largest storage vessel Spillage pump with multiple hose stations to allow clean-up within plant bund, to maintain bund capacity Greater plant area (including ROM Pad) enclosed in earthen bund to contain spills and potentially contaminated stormwater Drainage implemented such that stormwater within the earthen bund reports to the surface run-off pond Pumping station at surface water run-off pond to allow return of water to Wiltails plan for reuse 	Shown in Figure 2
2.	<p>Pipelines</p> <ul style="list-style-type: none"> from the sulphate plant to Wiltails Plant from Wiltails plant to CIL Plant 	<p>Situated within an earthen bund, and</p> <p>(a) equipped with telemetry systems and pressure sensors along pipelines to allow the detection of leaks and failures; or</p> <p>(b) equipped with automatic cut-outs in the event of a pipe failure; and/or</p> <p>(c) provided with secondary containment sufficient to contain any spill for a period equal to the time between inspections.</p>	Shown as 'Flotation tails pipeline' and 'CIL tank feed' in Figure 2.
3.	Lime dosing circuit	Within the concrete bunded area of the Carbon-in-leach plant	Shown as 'milk of lime main ring' on Figure 2

Compliance reporting

2. The works approval holder must within 30 calendar days of an item of infrastructure required by condition 1 being constructed:
 - (a) undertake an audit of their compliance with the requirements of condition 1; and
 - (b) prepare and submit to the CEO an Environmental Compliance Report on that compliance.
3. The Environmental Compliance Report required by condition 2, must include as a minimum the following:
 - (a) certification by a suitably qualified professional engineer that the items of infrastructure or component(s) thereof, as specified in condition 1, have been constructed in accordance with the relevant requirements specified in condition 1;
 - (b) as constructed plans and a detailed site plan for each item of infrastructure or component of infrastructure specified in condition 1; and
 - (c) be signed by a person authorised to represent the works approval holder and contains the printed name and position of that person.

Time limited operations phase

Commencement and duration

4. The works approval holder may only commence time limited operations for an item of infrastructure identified in condition 1 where the Environmental Compliance Report as required by condition 2 has been submitted by the works approval holder for that item of infrastructure.
5. The works approval holder may conduct time limited operations for an item of infrastructure specified in condition 6 (as applicable):
 - (a) for a period not exceeding 180 calendar days from the day the works approval holder meets the requirements of condition 4 for that item of infrastructure; or
 - (b) until such time as a licence for that item of infrastructure is granted in accordance with Part V of the *Environmental Protection Act 1986*, if one is granted before the end of the period specified in condition 5(a).

Time limited operations requirements and emission limits

6. During time limited operations, the works approval holder must ensure that the premises infrastructure and equipment listed in Table 2 and located at the corresponding infrastructure location is maintained and operated in accordance with the corresponding operational requirement set out in Table 2.

Table 2: Infrastructure and equipment requirements during time limited operations

	Site infrastructure and equipment	Operational requirement	Infrastructure location
1.	Wiltails plant – comprises: <ul style="list-style-type: none">• Belt feeder – plant feed point• Conveyor belt	<ul style="list-style-type: none">• Water sprays used at plant feed point• Bund capacity sufficient for failure of the largest storage	Shown as in Figure 2

	Site infrastructure and equipment	Operational requirement	Infrastructure location
	<ul style="list-style-type: none"> Scrubber and Trommel, including: <ul style="list-style-type: none"> Scrubber feed hopper Drum scrubber Scrubber discharge hopper, including Warman pump system, scats chute and scats bin Trash Screen, including track-mounted grizzly scalping screen 	<p>vessel is maintained</p> <ul style="list-style-type: none"> All stormwater within the earthen bund reports to the surface run-off pond Freeboard is maintained on the stormwater pond of at least 300mm or a 1 in 100 year/72 hour storm event (whichever is greater) 	
2.	<p>Pipelines</p> <ul style="list-style-type: none"> from the sulphate plant to Wiltails Plant from Wiltails plant to CIL Plant 	<ul style="list-style-type: none"> Maintained as constructed in Table 1 Visual integrity inspected daily when operating or weekly when not operating. 	Shown as 'Flotation tails pipeline' and 'CIL tank feed' in Figure 2.
3.	Lime dosing circuit	Maintained as constructed in Table 1.	Shown as 'milk of lime main ring' in Figure 2
4.	Mobile plant involved in the mining and transport of historic tailings	<ul style="list-style-type: none"> Visual monitoring of dust will be regularly conducted. Drop heights between excavators and trucks will be minimised. Water carts utilised for dust suppression if visible dust is generated that could cross the premises boundary. In the event of excessive dust that cannot be suppressed, activities will be halted, and the event recorded. 	Within the areas marked as 'Tailings reclaim' in Figure 1.

7. During time limited operations, the works approval holder must ensure that the emission(s) specified in Table 3, are discharged only from the corresponding discharge point(s) and only at the corresponding discharge point location(s).

Table 3: Authorised discharge points

Emission	Discharge point	Discharge point location
Wiltails Plant oversize 'scats'	TSF K	As shown in Figure 1 of Schedule 1.

8. The works approval holder shall immediately recover, or remove and dispose of, spills of environmentally hazardous materials including tailings and fuel, oil, or other hydrocarbons, whether inside or outside an engineered containment system.
9. The works approval holder must ensure that no visible dust generated from mining or transport of tailings material crosses the boundary of the premises.

- 10.** The works approval holder must manage dust generation at the premises from the mining and transport of tailings material by:
- (a) wetting down unsealed roads, exposed areas and if necessary, tailings (in trucks) with a water truck;
 - (b) limiting haulage trucks to speeds of less than 40km/hr;
 - (c) ceasing dust-generating activities during strong wind conditions; and
 - (d) Minimising drop height during all material transfer activities

Compliance reporting

- 11.** The works approval holder must submit to the CEO a report on the time limited operations within 30 calendar days of the completion date of time limited operations or 30 calendar days before the expiration date of the works approval, whichever is the sooner.
- 12.** The works approval holder must ensure the report required by condition 11 includes the following:
- (a) a summary of the time limited operations, including timeframes and amount of sulphide plant tailings and historical tailings processed;
 - (b) a summary of the environmental performance of all infrastructure as constructed or installed (as applicable).
 - (c) a review of performance and compliance against the conditions of the works approval; and
 - (d) where the manufacturer's design specifications and the conditions of this works approval have not been met, what measures will the works approval holder take to meet them, and what timeframes will be required to implement those measures.

Records and reporting (general)

- 13.** The works approval holder must record the following information in relation to complaints received by the works approval holder (whether received directly from a complainant or forwarded to them by the Department or another party) about any alleged emissions from the premises:
- (a) the name and contact details of the complainant, (if provided);
 - (b) the time and date of the complaint;
 - (c) the complete details of the complaint and any other concerns or other issues raised; and
 - (d) the complete details and dates of any action taken by the works approval holder to investigate or respond to any complaint.
- 14.** The works approval holder must maintain accurate and auditable books including the following records, information, reports, and data required by this works approval:
- (a) the works conducted in accordance with condition 1;
 - (b) any maintenance of infrastructure that is performed in the course of complying with condition 6;
 - (c) complaints received under condition 13.
- 15.** The books specified under condition 14 must:

- (a) be legible;
- (b) if amended, be amended in such a way that the original version(s) and any subsequent amendments remain legible and are capable of retrieval;
- (c) be retained by the works approval holder for the duration of the works approval; and
- (d) be available to be produced to an inspector or the CEO as required.

Definitions

In this works approval, the terms in Table 4 have the meanings defined.

Table 4: Definitions

Term	Definition
books	has the same meaning given to that term under the EP Act.
CEO	means Chief Executive Officer. CEO for the purposes of notification means: Director General Department administering the <i>Environmental Protection Act 1986</i> Locked Bag 10 Joondalup DC WA 6919 info@dwer.wa.gov.au
Department	means the department established under section 35 of the <i>Public Sector Management Act 1994</i> and designated as responsible for the administration of Part V Division 3 of the EP Act.
discharge	has the same meaning given to that term under the EP Act.
emission	has the same meaning given to that term under the EP Act.
Environmental Compliance Report	means a report to satisfy the CEO that the conditioned infrastructure has been constructed in accordance with the works approval.
EP Act	<i>Environmental Protection Act 1986</i> (WA).
EP Regulations	<i>Environmental Protection Regulations 1987</i> (WA).
premises	the premises to which this works approval applies, as specified at the front of this works approval and as shown on the premises map (Figure 1) in Schedule 1 to this works approval.
prescribed premises	has the same meaning given to that term under the EP Act.
strong wind conditions	means wind speeds of 22 knots or greater, or a Beaufort Scale rating of 6 or greater.
suitably qualified professional engineer	means a person who: <ul style="list-style-type: none"> holds a Bachelor of Engineering recognised by the Engineers Australia; and has a minimum of five years of experience working in a relevant supervisory area of civil engineering, or is otherwise approved in writing by the CEO to act in this capacity.

Term	Definition
time limited operations	refers to the operation of the infrastructure and equipment identified under this works approval that is authorised for that purpose, subject to the relevant conditions.
works approval	refers to this document, which evidences the grant of the works approval by the CEO under section 54 of the EP Act, subject to the conditions.
works approval holder	refers to the occupier of the premises being the person to whom this works approval has been granted, as specified at the front of this works approval.

END OF CONDITIONS

Schedule 1: Maps

Premises map

The boundary of the prescribed premises is shown in the map below (Figure 1).

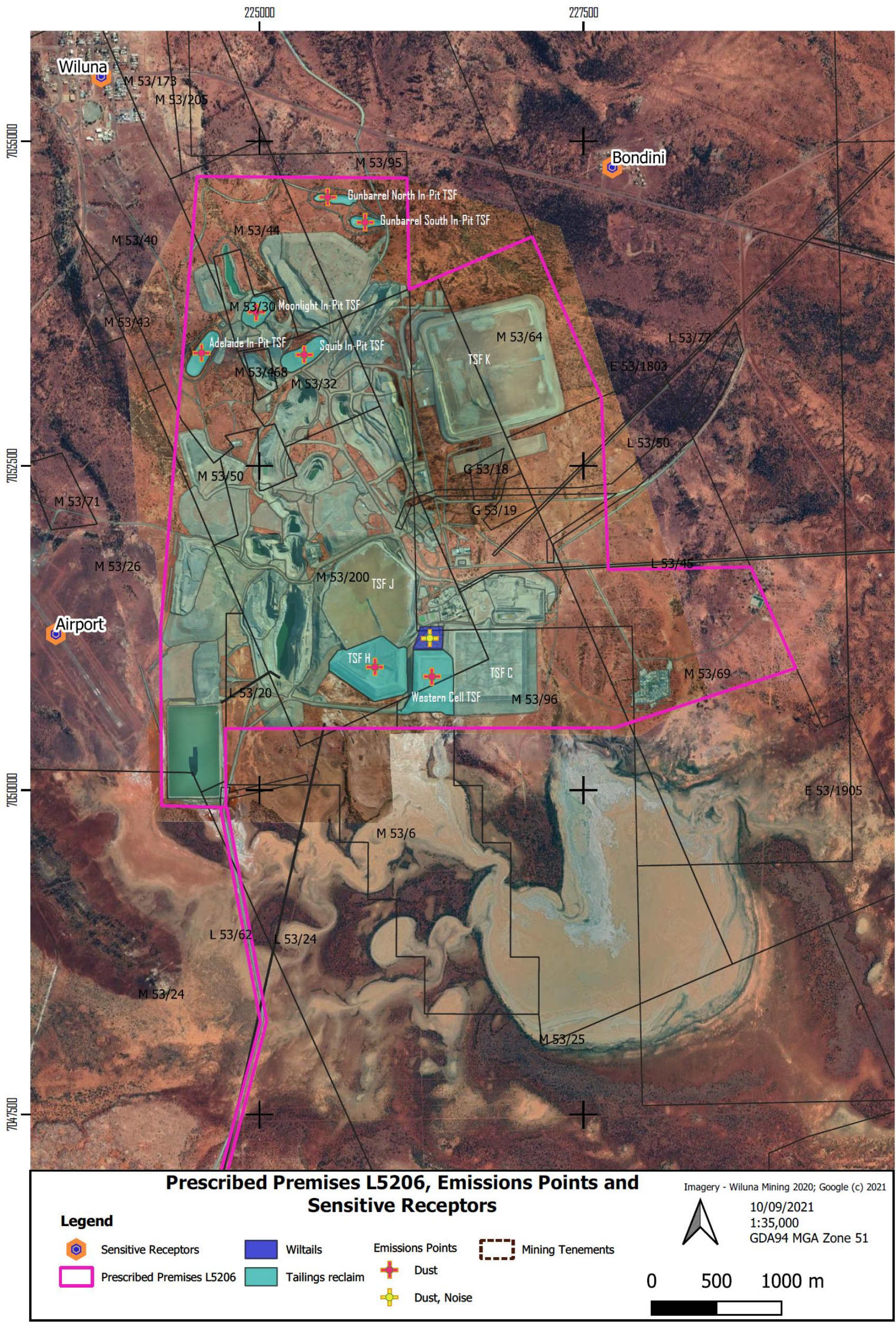


Figure 1: Map of the boundary of the prescribed premises

Infrastructure map

The infrastructure relating to this works approval is shown in the map below (Figure 2).

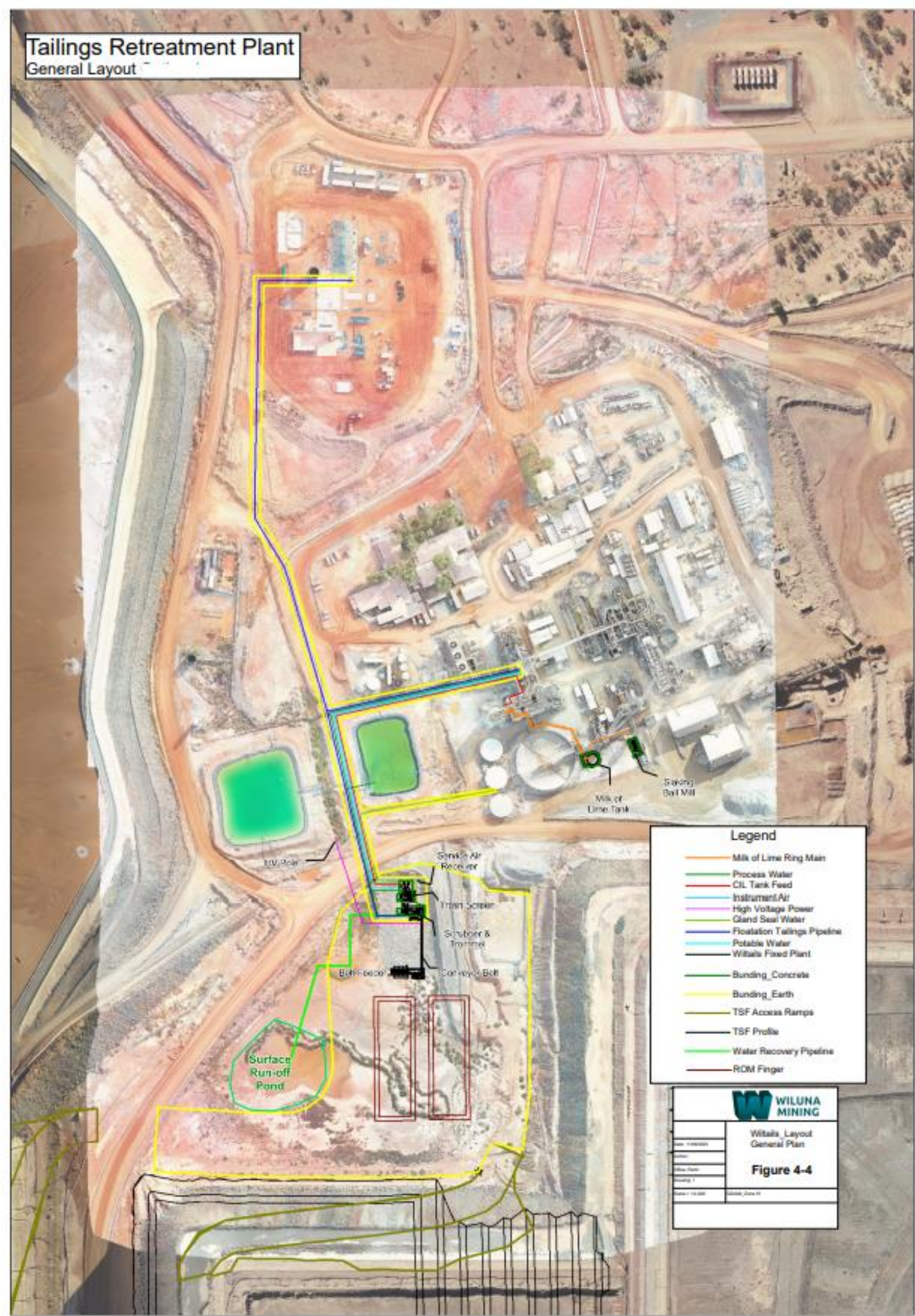


Figure 2: Map of the Wiltails plant and associated infrastructure layout

Schedule 2: Premises boundary

The premises boundary is defined by the coordinates in Table 5 below.

Table 5: Premises boundary coordinates

Easting	Northing
224742.089	7049867.493
224246.243	7049880.891
224237.22	7051229.787
224520.307	7054730.601
226140.026	7054717.772
226156.168	7053859.768
227104.963	7054265.79
227639.559	7053025.167
227691.905	7051700.305
228791.127	7051720.437
229139.702	7050941.175
227739.738	7050481.221
224737.954	7050475.195
224742.089	7049867.493
224749.593	7049865.323
224767.363	7049769.606
225057.782	7048222.789
224632.811	7046600.94
225808.067	7041517.537
225759.326	7041506.267
224581.451	7046601.803
225008.821	7048213.604
224718.419	7049760.424
224700.661	7049856.245
224700.867	7049868.443
224742.089	7049867.493
224749.593	7049865.323