



<b>Works approval number</b>	W5912/2015/2
<b>Works approval holder</b>	Swan Waste Solutions Pty Ltd
<b>ACN</b>	169 223 778
<b>Registered business address</b>	544 Beaufort Street MT LAWLEY WA 6150
<b>DWER file number</b>	DER2015/001686
<b>Duration</b>	18 July 2016 to 30 June 2026
<b>Date of issue</b>	15 July 2016
<b>Date of amendment</b>	17 June 2021
<b>Premises details</b>	Swan Waste Solutions Pty Ltd Lots 202 and 203 on Deposited Plan 46016 Wandena Road, MUCHEA WA 6501

<b>Prescribed premises category description (Schedule 1, <i>Environmental Protection Regulations 1987</i>)</b>	<b>Assessed production / design capacity</b>
Category 13: Crushing of building material: premises on which waste building or demolition material (for example, bricks, stones or concrete) is crushed or cleaned.	50,000 tonnes per annual period
Category 61A: Solid waste facility: premises (other than premises within category 67A) on which solid waste produced on other premises is stored, reprocessed, treated, or discharged onto land.	50,000 tonnes per annual period

This works approval is granted to the works approval holder, subject to the attached conditions, on 17 June 2021, by:

Stephen Checker  
**MANAGER, WASTE INDUSTRIES  
REGULATORY SERVICES**

an officer delegated under section 20 of the *Environmental Protection Act 1986* (WA)

## Works approval history

Date	Reference number	Summary of changes
15/07/2016	W5912/2015/1	Works Approval granted.
15/02/2018	W5912/2015/1	Works Approval duration extended to 5 August 2020 to align with Planning Approval.
15/07/2020	W5912/2015/1	Works Approval duration extended to 30 June 2021 to align with Planning Approval.
17/06/2021	W5912/2015/2	Works Approval duration extended to 30 June 2026.

## Interpretation

In this works approval:

- (a) the words 'including', 'includes' and 'include' in conditions mean "including but not limited to", and similar, as appropriate;
- (b) where any word or phrase is given a defined meaning, any other part of speech or other grammatical form of that word or phrase has a corresponding meaning;
- (c) where tables are used in a condition, each row in a table constitutes a separate condition;
- (d) any reference to an Australian or other standard, guideline, or code of practice in this works approval:
  - (i) if dated, refers to that particular version; and
  - (ii) if not dated, refers to the latest version and therefore may be subject to change over time;
- (e) unless specified otherwise, any reference to a section of an Act refers to that section of the EP Act; and
- (f) unless specified otherwise, all definitions are in accordance with the EP Act.

**NOTE:** This Works Approval requires specific conditions to be met but does not provide any implied authorisation for other emissions, discharges, or activities not specified in this works approval.

# Works Approval Conditions

## General

1. Key items of infrastructure which are required to be built are listed in the Table 1: Infrastructure requirements. The Works Approval Holder must not depart from the requirements specified in column 2 of Table 1 except:
  - (a) where such departure is minor in nature and does not materially change or affect the infrastructure; or
  - (b) where such departure improves the functionality of the infrastructure and does not increase risks to public health, public amenity or the environment; and
  - (c) all other Conditions in this Works Approval are still satisfied.

Table 1: Infrastructure requirements	
Infrastructure	Requirements (Design and Construction)
Installation of a crushing plant	<ul style="list-style-type: none"> <li>- Mobilisation and positioning of crushing plant that has a sound power level equal to or lower than 108 dBA; and</li> <li>- Crushing plant shall be located on the base of the quarry pit (80m AHD) and adjacent the existing quarry wall, located on Lot 202 on Plan 46016 Wandena Road, MUCHEA, WA.</li> </ul>
Installation of a screening plant	<ul style="list-style-type: none"> <li>- Mobilisation and positioning of a screening plant that has a sound power level equal to or lower than 107 dBA; and</li> <li>- Screening plant shall be located on the base of the quarry pit (80m AHD) and adjacent the existing quarry wall, located on Lot 202 on Plan 46016 Wandena Road, MUCHEA, WA.</li> </ul>
Access roads	<ul style="list-style-type: none"> <li>- Constructed using processed waste as specified in Table 2</li> </ul>
Office block foundation	<ul style="list-style-type: none"> <li>- Constructed using processed waste as specified in Table 2</li> </ul>
Noise barriers	<ul style="list-style-type: none"> <li>- Constructed using processed waste as specified in Table 2;</li> <li>- total length of 236m and 4m in height;</li> <li>- minimum surface density of 10kg/m<sup>2</sup>;</li> <li>- Located in accordance with the noise barrier map in Schedule 1.</li> </ul>
Two Beta Attenuation Monitors (BAM)	<ul style="list-style-type: none"> <li>- Installed on the western boundary of Lot 202 immediately adjacent to the quarry void (BAM installation area) as depicted in Schedule 1;</li> <li>- Installed in accordance with the Australian/New Zealand Standard AS/NZS 3580.1.1:2007 Methods for sampling and analysis of ambient air – Guide to siting monitoring equipment.</li> </ul>

2. The Works Approval Holder is only authorised to accept and process waste for the purposes of constructing a noise barrier and civil works (office block and access roads) on the Premises as specified in Table 1: Infrastructure requirements.
3. The Works Approval Holder is not authorised to undertake any infilling of waste in the quarry void.

## Premises Operation

4. The Works Approval Holder shall only accept waste on to the Premises if:

- (a) it is of a type listed in Table 2;
- (b) it meets any specification listed in Table 2; and
- (c) it is processed as specified in Table 2.

<b>Table 2: Waste acceptance and processing</b>			
<b>Waste</b>	<b>Quantity Limit</b>	<b>Specification</b>	<b>Process Limit</b>
Clean fill	N/A	None	Receipt, handling, storage, crushing and screening only for the construction of noise barriers, office block foundations and access roads on site.
Inert Waste Type 1	N/A	Waste containing visible asbestos or ACM shall not be accepted	

5. The Works Approval Holder shall ensure that where waste does not meet the waste acceptance criteria set out in Condition 2 it is removed from the Premises by the delivery vehicle or, where that is not possible, stored in a quarantined storage area or container and removed to an appropriately authorised facility as soon as practicable.
6. The Works Approval Holder shall ensure that any waste that does not conform to the waste acceptance criteria in Table 2 due to asbestos content, is covered or bagged and kept within a clearly identified, labelled, segregated and secure container prior to being removed off site to an appropriate authorised facility within 48 hours.
7. The Works Approval Holder must advise all source material providers that asbestos or potentially asbestos contaminated material is not accepted at the Premises.
8. The Works Approval Holder must include a 'no asbestos' clause in all contracts with all source material providers.
9. The Works Approval Holder must maintain a clearly visible sign saying 'No Asbestos' at the entry to the Premises.
10. The Works Approval Holder must visually inspect all loads of waste when they arrive at the Premises prior to unloading to determine the risk of a load containing asbestos or ACM and each load shall be classified in accordance with the risk classification procedure outlined in Section 3.3 of the DWER Asbestos Guidelines (Classified Load).
11. Where the inspection required by Condition 10 confirms that the load does contain asbestos or ACM, the Works Approval Holder must:
  - (a) reject the waste for acceptance;
  - (b) maintain accurate records of all rejected loads on the Premises and the documentation must be made available to DWER officers upon request; and
  - (c) record the details of the waste source, material carrier, registration number of the vehicle and date of rejection.
12. The Works Approval Holder shall direct each accepted and Classified Load to an unloading area at the site for further inspection. The unloading area shall be appropriately designed and constructed to ensure the waste will not mix with other waste.
13. The Works Approval Holder shall dampen all Classified Loads prior to unloading and maintain the waste in a damp state throughout the inspection process using appropriate dust suppression measures.
14. The Works Approval Holder must inspect and maintain records for all unloaded waste in accordance with the low risk and high risk load procedure as outlined in section 3.4 of the DWER Asbestos Guidelines.
15. The Works Approval Holder must continue to visually inspect waste on the Premises at all stages of the storage, sorting and screening process. Suspect asbestos identified

at any stage of the process must be handled in accordance with the high risk load procedure outlined section 3.4 of the DWER Guidelines.

16. The Works Approval Holder must maintain waste and processed waste on the Premises in at least two separate stockpile areas for unprocessed waste, processed waste tested for ACM and:
  - (a) unprocessed waste and processed waste areas must be kept clearly separated at a minimum 3 m distance;
  - (b) processed waste tested for ACM and processed waste awaiting testing for ACM must be clearly separated by a minimum 3 m distance OR clearly delineated and separated with impermeable barriers; and
  - (c) clearly visible and legible signage must be erected on individual stockpiles to clearly identify and delineate tested processed waste, untested processed waste and unprocessed waste.
17. The Works Approval Holder shall ensure that the asbestos content of any recycled output originating from Inert Waste Type 1 does not exceed the contamination limit of 0.001% w/w for asbestos (in any form).
18. The Works Approval Holder shall ensure that recycling outputs originating from Inert Waste Type 1 are sampled and tested in accordance with the DWER Asbestos Guidelines.

## Emissions

19. The Works Approval Holder shall undertake the following dust mitigation measures:
  - (a) Wet down any dry loads prior to and/or after tipping as required to suppress dust emissions;
  - (b) Wet down any waste during crushing and screening activities;
  - (c) Maintaining waste and processed waste stockpiles in a damp condition to suppress dust lift-off;
  - (d) Halt crushing and screening operations during adverse weather conditions when wind direction is towards the sensitive receptors; and
  - (e) Wet down internal trafficked roads to suppress dust lift-off.
20. Prior to commencement of crushing and screening operations, the Works Approval Holder shall provide to the CEO an Asbestos Management Plan which includes regular monitoring of asbestos in air emissions and which meets the requirements of the DWER Asbestos Guidelines.
21. The Works Approval Holder shall only undertake crushing and screening activities within the quarry void.
22. The Works Approval Holder shall ensure that all processed waste is maintained in a damp state whilst it is being incorporated into the noise barrier.

## Monitoring

23. The Works Approval Holder shall undertake the monitoring in Table 3 according to the specifications in that table.

Table 3: Monitoring of inputs processing and outputs				
Input/Output	Parameter	Units	Averaging period	Frequency
Waste inputs	Clean fill, Inert Waste Type 1	m <sup>3</sup>	N/A	Each load arriving at premises
Processed waste	Materials processed for the construction of: (a) Noise barriers (b) Office blocks	m <sup>3</sup>		Each load placed

	(c) Access roads			
Waste outputs	Waste type as defined in the Landfill Definitions	m <sup>3</sup>		Each load leaving or rejected from the Premises

24. The Works Approval Holder shall undertake the monitoring in Table 4 according to the specification in that table.

<b>Table 4: Monitoring of ambient air quality</b>					
<b>Monitoring point reference and location</b>	<b>Parameter</b>	<b>Units<sup>1</sup></b>	<b>Averaging period</b>	<b>Frequency</b>	<b>Method</b>
BAM1 (BAM installation area depicted in Schedule 1)	Particulates as PM <sub>10</sub>	µg/m <sup>3</sup>	24 hours	Continuous	AS/NZS 3580.9.11
BAM2 (BAM installation area depicted in Schedule 1)	Total suspended particulates	µg/m <sup>3</sup>	24 hours	Continuous	AS/NZS 3580.9.11

## Information

25. On completion of the works described in Table 1 the Works Approval Holder must provide to the CEO certification in the form of a compliance document which shall:
- (a) certify that the works authorised in Table 1 were constructed, mobilised or installed in accordance with the conditions of the works approval;
  - (b) provide a summary of the wastes received, processed and destination as required by Condition 23; and
  - (c) be signed by a person authorised to represent the Works Approval Holder and contain the printed name and position of that person within the company.
26. If any material departures to the works specified in Table 1 have occurred, the Works Approval Holder must provide the CEO with a list of departures which are certified as complying with Condition 1 at the same time, and from the same authorised person, as the certification under Condition 25.

---

## END OF CONDITIONS

# Definitions

In this Licence, the terms in **Error! Reference source not found.** have the meanings defined.

Error! Reference source not found.: Definitions

Term	Definition
acceptance criteria	has the same meaning given to that term under the Landfill Definitions
ACN	Australian Company Number
ACM	means Asbestos Containing Material
Act	means the <i>Environmental Protection Act 1986</i>
annual period	a 12 month period commencing from 1 July until 30 June of the immediately following year.
AS 3580.1.1	means the Australian Standard AS 3580.1.1 <i>Methods for sampling and analysis of ambient air – Guide to siting air monitoring equipment</i>
AS/NZS3580.9.11	means the Australian/New Zealand Standard AS 3580.9.11 Methods for sampling and analysis of ambient air- Determination of suspended particulate matter – PM10 beta attenuation monitors
asbestos	means the asbestiform variety of mineral silicates belonging to the serpentine or amphibole groups of rock-forming minerals and includes actinolite, amosite, anthophyllite, chrysotile, crocidolite, tremolite and any mixture containing 2 or more of those
BAM	means Beta Attenuation Monitor
CEO	means Chief Executive Officer of the Department of Water and Environmental Regulation. “submit to / notify the CEO” (or similar), means either: Director General Department administering the <i>Environmental Protection Act 1986</i> Locked Bag 10 Joondalup DC WA 6919 or: <a href="mailto:info@dwer.wa.gov.au">info@dwer.wa.gov.au</a>
clean fill'	has the meaning defined in Landfill Definitions;
classified load'	means the classification of waste loads during acceptance and post acceptance based on the risk of waste material containing asbestos or ACM and through visual inspection. Classification of waste loads shall be undertaken in accordance with the provisions outlined in Section 3.3 and 3.4 DER Asbestos Guidelines
damp	means moist to the touch
dBA	means A-weighted decibels
DWER Asbestos Guidelines	means document titled “Guidelines for managing asbestos at construction and demolition waste recycling facilities”, published by the Department of Environment and Conservation, as amended from time to time



Term	Definition
Department	means the department established under section 35 of the <i>Public Sector Management Act 1994</i> (WA) and designated as responsible for the administration of the EP Act, which includes Part V Division 3
Discharge	has the same meaning given to that term under the EP Act
DWER	Department of Water and Environmental Regulation
emission	has the same meaning given to that term under the EP Act
EP Act	<i>Environmental Protection Act 1986</i> (WA)
Inert Waste Type 1	has the meaning defined in Landfill Definitions
Landfill Definitions	means the document titled “Landfill Waste Classification and Waste Definitions 1996” published by the Chief Executive Officer of the Department of Water and Environmental Regulation as amended from time to time
Premises	refers to the premises to which this licence applies, as specified at the front of this licence and as shown on the premises map (Figure 1) in Schedule 1 and the premises boundary coordinates in Schedule 2 of this licence
Schedule 1	means Schedule 1 of this Licence unless otherwise stated
Spot sample	means a discrete sample representative at the time and place at which the sample is taken
Waste	has the same meaning given to that term under the EP Act
Works Approval	means this Works Approval numbered W5912/2015/1 and issued under the <i>Act</i>
Works Approval Holder	means the person or organisation named as the Works Approval Holder on page 1 of the Works Approval



## Schedule 1: Maps

### Premises map

The Premises and surrounding sensitive receptors and land uses are shown in the map below (Figure 1). The pink line depicts the Premises boundary and the pink shaded area depicts the Bush Forever area. The solid yellow line depicts the area suitable for BAM installation.

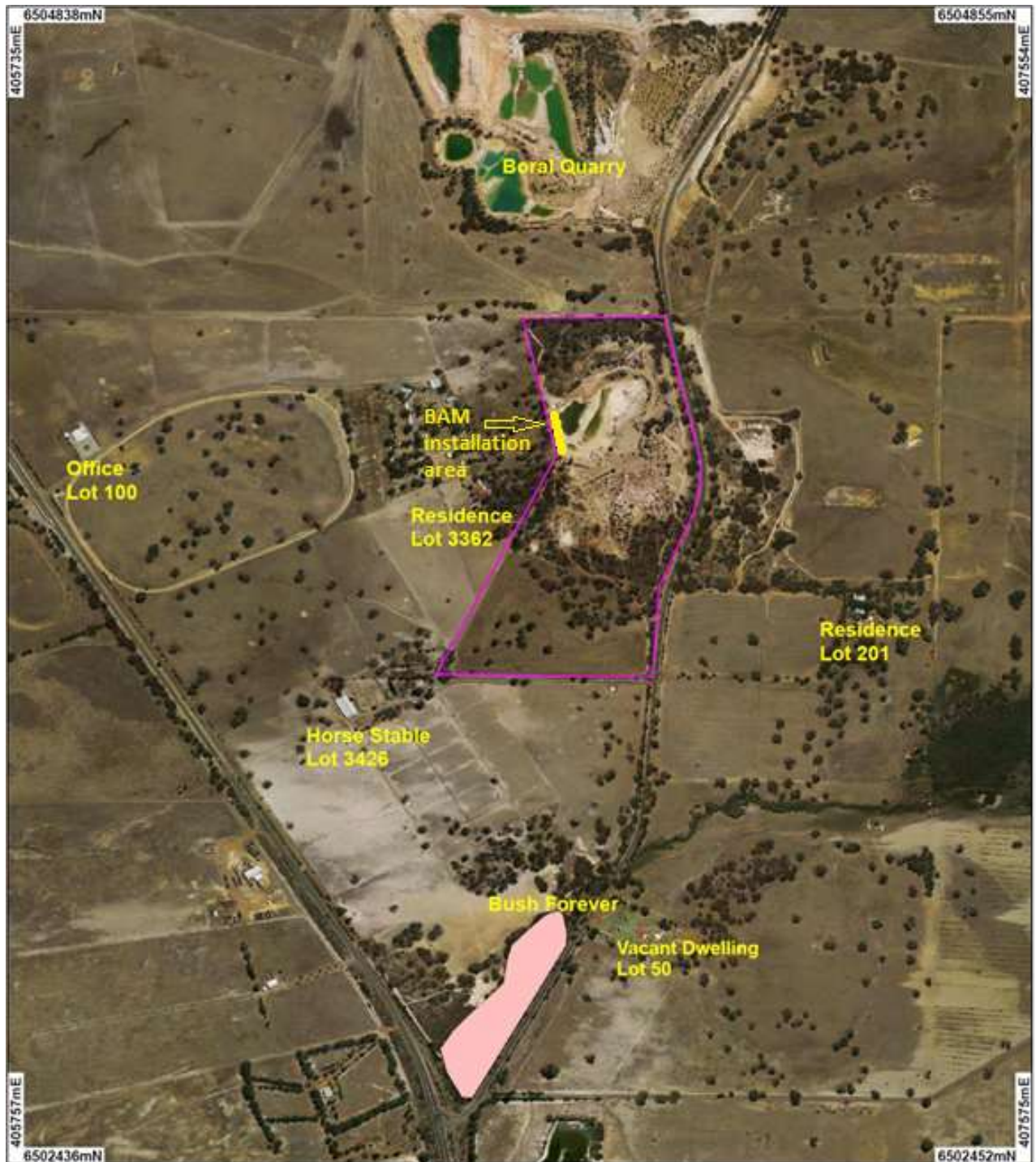


Figure 1: Map of the boundary of the prescribed premises

## Noise barrier map

Figure 2 below depicts the location and dimensions of the noise barrier.



**Figure 2: Noise barrier plan**