

Licence Renewal Supporting Information – Lancelin Waste Management Facility (L6911/1997/10)

Shire of Gingin



Unless specifically agreed otherwise in the contract of engagement, ASK Waste Management Pty Ltd retains Intellectual Property Rights over the contents of this report. The client is granted a licence to use the report for the purposes for which it was commissioned.

Acknowledgements

ASK Waste Management acknowledges the Traditional Owners of the land in which we work and live, and pays respects to Elders past, present, and emerging.

ASK also gratefully acknowledges the cooperation of the Shire of Gingin staff that provided information and assistance in the development of this report.

Disclaimer

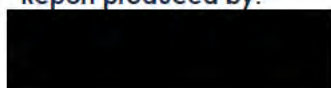
Information in this document is current as of February 2024. While all professional care has been undertaken in preparing the document, ASK Waste Management accepts no liability for loss or damages incurred as a result of reliance placed on its content.

Any plans, designs or otherwise contained in this report are schematic and are provided for general guidance only. No reliance should be made by any user on this material for construction purposes. Advice must be sought from a suitably qualified engineer, prior to any construction, excavation or otherwise.

The mention of any company, product or process in this report does not constitute or imply endorsement by ASK Waste Management.

Document Control			
Version	Date	Description	Initials
1B	13 Feb 2024	Final version for submittal to DWER	AE

Report produced by:



ASK Waste Management

PO BOX 401
Brunswick Heads
NSW. 2483
AUSTRALIA


admin@askwm.com
www.askwm.com



Table of Contents

1	APPLICATION SUMMARY	4
2	PREMISES DETAIL (PART 3 - ATTACHMENT 2)	5
2.1	Premises Location and Map	5
3	PROPOSED ACTIVITIES (PART 4 - ATTACHMENT 3B)	8
3.1	Prescribed Activities	8
3.1.1	Category 62	8
3.1.2	Category 64	8
3.2	Waste Acceptance	8
3.3	Premises Infrastructure and Equipment	9
3.4	Description of Site Operations	10
4	EMISSIONS, DISCHARGES AND WASTE (PART 9 - ATTACHMENT 6A)	12
4.1	Emissions and Discharges	12
4.2	Waste types	15
5	SITING AND LOCATION (ATTACHMENT 7 - PART 10)	16
5.1	Sensitive Land uses	16
5.2	Nearby Environmentally Sensitive Receptors	17
5.2.1	Threatened Ecological Communities, Threatened and Priority Flora and Fauna	19
5.3	Siting Context	20
6	PROPOSED FEE CALCULATION (PART 13 - ATTACHMENT 10)	21

List of Figures

Figure 2.1	Siting of the Lancelin Waste Management Facility	5
Figure 2.2	Aerial overview of Lancelin Waste Management Facility (July 2023)	6
Figure 2.3	Facility Layout Plan (detail)	7
Figure 5.1	Siting of the Lancelin Waste Management Facility	16
Figure 5.2	Landuse zoning surrounding the LWMF(DPLH – 071)	16
Figure 5.3	DWER Environmental Siting criteria locations in relation to the Lancelin Waste Management Facility	18
Figure 5.4	Proximity of the Facility to threatened ecological communities, priority fauna, and priority flora (DBCA 036,037 & 038)	19
Figure 5.5	Proximity of the landfill to threatened ecological communities, priority fauna, and priority flora (detail) (DBCA 036,037 & 038)	20
Figure 6.1	Online licence fee renewal calculator	21

List of Tables

Table 3.1	Proposed waste acceptance streams at the LWMF	8
Table 3.2	Infrastructure and equipment (Table 4.1 from Application form)	9
Table 3.3	Site processing detail	10
Table 4.1	Emissions and Discharges (Table 9.1 of the application form)	12
Table 5.1	Nearby environmentally sensitive receptors and aspects (Table 10.2 of Application Form)	17

1 APPLICATION SUMMARY

This licence renewal application relates to the operation of the Lancelin Waste Management Facility. The Shire of Gingin (the Shire) operates the Lancelin Waste Management Facility (The Facility or LWMF) as a Category 64 Class II unlined putrescible landfill under the Department of Water and Environment Regulation (DWER) Licence L6911/1997/10.

The LWMF provides waste disposal and recycling services to the population centres of Lancelin, Ledge Point, Nilgen and Karakin within the Shire of Gingin. The estimated catchment population of the landfill is approximately 1,576 people (2022, ABS ERP). The LWMF has been operational since early 1980's and was licenced by DWER in 2013.

The Facility is located approximately 128km from Perth in the town of Lancelin and is accessed via a unsealed road off Lancelin Road. The Facility contains a landfill, stockpile areas, reuse shed/area, gatehouse and an inactive liquid waste pond. The liquid waste pond, lined with high density polyethylene (HDPE), was established circa 2009/2010 and is located in the southeast corner of the site. The Shire ceased the acceptance of liquid waste in approximately 2013. The pond is fenced and dry.

The Shire is currently undertaking a waste reform and strategic planning project to inform future service delivery and infrastructure requirements. The Shire has three landfills (Gingin, Lancelin and Seabird) and is considering the consolidation of these landfills, with the closure of both Gingin and Lancelin landfills and the development of transfer stations to service these communities. Waste will be transported to the Seabird landfill for disposal. The final Council decision on consolidation and closure of landfills in the Shire is proposed to be brought before Council in early 2024.

The current licence for the Facility is due to expire on Saturday 14 July 2024. Whilst the decision on the continued operation of the landfill is under consideration, it is proposed that the licence for the Facility be renewed to facilitate continued waste disposal operations within the town. Once the outcome of the Shire decision is known, the Shire will undertake the necessary approvals and licence amendment processes for any changes that may impact the content of the operational licence for the Facility.

The supporting information contained within this report is provided to assist with the licence renewal application form submitted as part of this application package and in line with the requirements of the application form (v16 August 2022).

2 PREMISES DETAIL (PART 3 - ATTACHMENT 2)

2.1 PREMISES LOCATION AND MAP

The LWMF is located on Lot 11089 on Plan 188900 Lancelin Road, Lancelin (the Site). Lancelin is a small coastal town 128km north of Perth. The Site is located 2.4km southeast of the Lancelin town centre, covering an area of approximately 25 ha, with the Facility operations occupying approximately 4 ha.

The landfill siting can be found in **Figure 2.1**.

Figure 2.1 Siting of the Lancelin Waste Management Facility



An aerial image of the Facility showing the prescribed premises boundary is provided in **Figure 2.2**.

A Facility layout plan identifying key infrastructure and buildings is provided in **Figure 2.3**.

Figure 2.2 Aerial overview of Lancelin Waste Management Facility (July 2023)

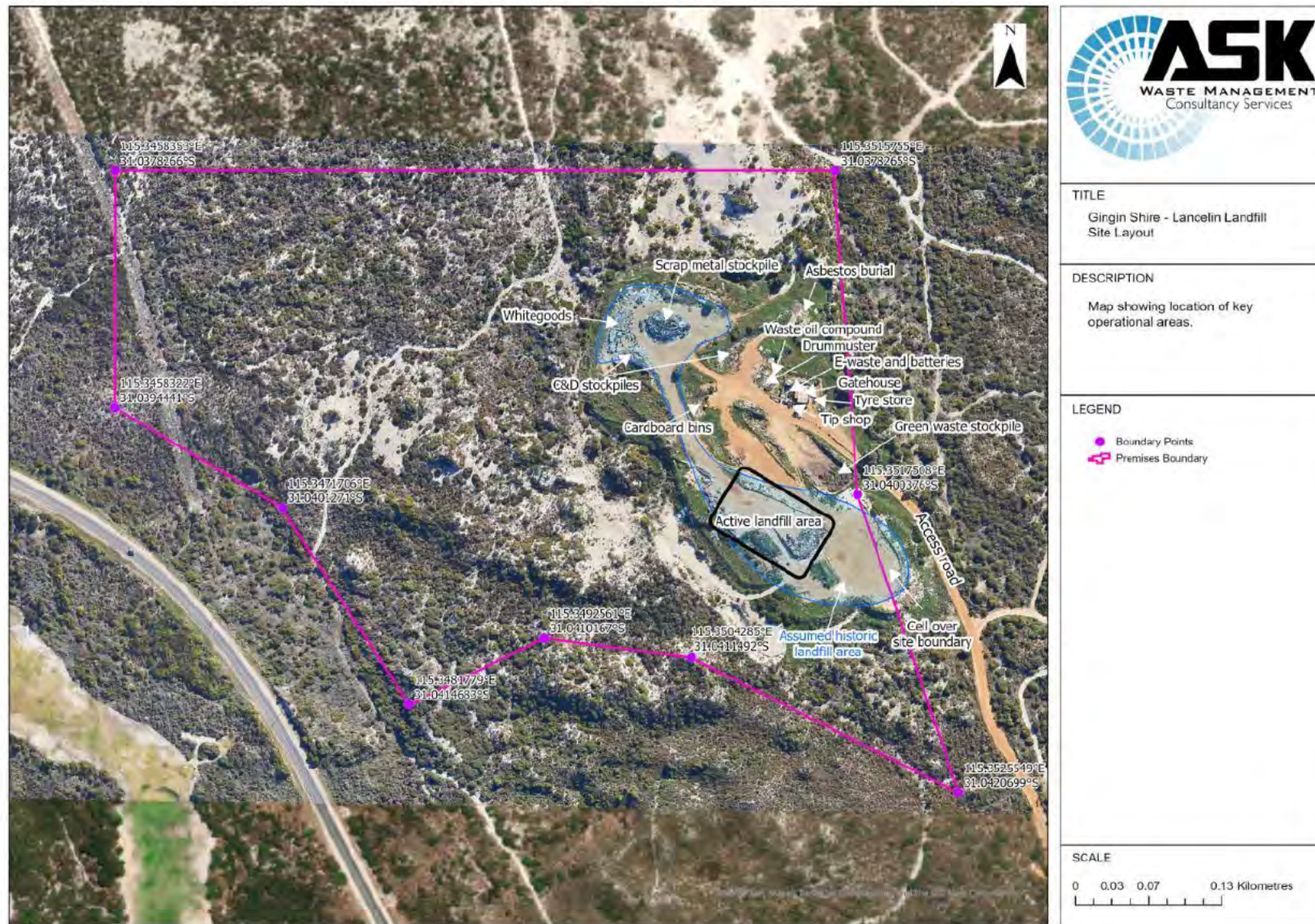


Figure 2.3 Facility Layout Plan (detail)



3 PROPOSED ACTIVITIES (PART 4 - ATTACHMENT 3B)

It is proposed to continue to operate the Lancelin Waste Management Facility as a 64 Class II unlined putrescible landfill and Category 62 Solid waste transfer station. Information on the proposed activities is provided below and includes:

- Prescribed activity & proposed design capacity
- Waste acceptance streams
- Infrastructure and equipment
- Description of site operations

3.1 PRESCRIBED ACTIVITIES

3.1.1 CATEGORY 62

It is proposed that the Facility be licenced as a Category 62 prescribed premises so that up to 2000 tonnes of waste can be stored or sorted pending offsite recycling and/or disposal.

3.1.2 CATEGORY 64

The LWMF accepts and processes wastes for disposal and/or recycling. It is proposed that the Facility continues to be licenced as a Category 64 Class II Putrescible landfill. The category design capacity is requested at not more than 5,000 tpa.

3.2 WASTE ACCEPTANCE

The following wastes as defined by the Landfill Waste Classification and Waste Definitions (1996, as amended 2019) are proposed to be accepted at the Facility.

Table 3.1 Proposed waste acceptance streams at the LWMF

Waste type	Waste detail	Quantity	Processes
Putrescible waste	Kerbside collected waste, and drop off waste from municipal and commercial sources	Combined total of not more than 5,000 tonnes per annual period	Disposal by Landfill
Special Waste Type 1	Asbestos waste		Disposal by Landfill
Greenwaste	Generated from commercial, and municipal sources		Receipt, handling, storage prior to mulching, disposal by burning and/or disposal to landfill
Inert Waste Type 1	Building and demolition waste, scrap metal, car bodies, whitegoods		C & D material receipt, handling, storage for future reuse and/or disposal to landfill Scrap metal receipt, handling and storage prior to offsite recycling
Contaminated solid waste			Disposal by Landfill
Inert Waste Type 2	Tyres		Receipt, handling and storage prior to offsite recycling
Hazardous waste	Used oil		
	Vehicle batteries		
	E-waste		
	Fluorescent globes		
Other recyclables	Comingled recycling, cardboard		

3.3 PREMISES INFRASTRUCTURE AND EQUIPMENT

Solid and liquid waste accepted at the Facility will be handled using the infrastructure and equipment as listed in **Table 3.2**. The table lists the relevant prescribed premises category the infrastructure relates to, whether it is Critical Containment Infrastructure, and provides a reference to the site plan layout which is provided in **Figure 2.3**.

Table 3.2 Infrastructure and equipment (Table 4.1 from Application form)

Infrastructure and equipment	Prescribed Premises	Site plan reference	CCI?	Environmental commissioning required
Site office and Gatehouse	All	Gatehouse	No	No
Greenwaste stockpile area (domestic & commercial) 3 sided bunded stockpile area to store greenwaste	62	Greenwaste stockpile	No	No
Scrap metal stockpile area 3 sided bunded stockpile area to store scrap metal	62	Scrap metal stockpile	No	No
C&D stockpile area Stored on insitu hardstand	62/64	C&D stockpiles	No	No
Tyre storage area Stored on insitu hardstand	62	Tyre store	No	No
Cardboard bins Caged containers on in situ hardstand	62	Cardboard Bins	No	No
Landfill cells Unlined landfill cells	64	Active tip face	Yes	No
Asbestos burial cells Unlined landfill cell	64	Asbestos burial	Yes	No
Waste oil collection facility Enclosed oil collection facility	62	Waste oil collection	Yes	No
Drummuster compound Fenced compound for triple rinsed containers	62	Drummuster	No	No
Vehicle batteries storage Stored on pallets on an insitu hardstand	62	Tip shop	No	No
E-waste storage Stored in a caged container on an insitu hardstand	62	Tip shop	No	No
Fluorescent globes storage Stored in 240L MGB on insitu hardstand	62	Tip shop	No	No
Facility Access Road	All	Access Road	No	No

3.4 DESCRIPTION OF SITE OPERATIONS

The Facility processing operations will occur as detailed in **Table 3.3**.

Table 3.3 Site processing detail

Waste type	Process(es)	Process controls and description
Putrescible waste	Disposal of waste by landfilling	<ul style="list-style-type: none"> No waste shall be landfilled within 35 metres from the boundary of the premises No waste will be placed closer than 10 metres to the boundary of the premises for below ground operations Waste will be placed within a defined trench or an area enclosed by earthen or other bunds The maximum linear length of the tipping areas will be 30 metres; the tipping face will not exceed 2 metres in vertical height Waste will be covered with 150mm of cover material at the end of each days operation or with at least 230mm of cover material at the end of each week Municipal waste from kerbside trucks will be covered within 24 hours of delivery Stockpile sufficient cover material to allow waste to be covered in accordance for two weeks and to cover waste in the event of a fire An undisturbed separation distance of at least three metres between the base of the current and future waste disposal areas and the highest level of the groundwater will be maintained
Clean Fill	Receipt, handling and disposal by landfilling	<ul style="list-style-type: none"> Stockpiled and used for capping and daily cover as required
Inert Waste type 1 (Used tyres)	Receipt, handling and storage prior to shredding, re-use of disposal by landfilling	<ul style="list-style-type: none"> No more than 99 units to be stored onsite Tyres will be stored in the designated tyre store area The storage area will be kept clear of vegetation at all times
Inert Waste type 1 (Scrap metal including whitegoods)	Receipt, handling and storage prior to recycling	<ul style="list-style-type: none"> Scrap metal will be stored in a designated area Scrap metal will be stockpiled and surrounded by a three sided insitu bund Whitegoods will be degassed prior to acceptance or offsite recycling
Inert Waste type 1 (C&D material)	Receipt, handling and storage prior to recycling and/or disposal	<ul style="list-style-type: none"> C & D waste will be stored in a designated area C &D waste will be stockpiled and surrounded by a three sided insitu bund Subject to acceptance controls as listed in the site Asbestos Management Plan
Greenwaste	Receipt, handling, storage prior to recycling or disposal by burning.	<ul style="list-style-type: none"> Greenwaste will be stored in windrows and surrounded by a three sided insitu bund <p><u>Disposal by burning of green waste</u></p> <ul style="list-style-type: none"> Will be dried and seasoned for at least 2 months before burning Will take place in a designated area at least 25 metres from any active disposal areas or the boundary of the premises burn greenwaste in a manner to minimise the generation of smoke Will take place in windrows or trenches Site operator will be in attendance until the fire is extinguished

		<ul style="list-style-type: none"> Will not take place during DFES prohibited or restricted burning periods
Special Waste Type 1 (Asbestos)	Receipt, handling, storage prior or disposal by landfilling	<ul style="list-style-type: none"> Asbestos material must be wrapped in heavy duty plastic or other suitable material to be accepted onsite Subject to acceptance controls as listed in the site Asbestos Management Plan Will be disposed of within a designated area within the landfill in an area not likely to be excavated, or disturbed by traffic movement Covered with 1m of clean fill (cover material) as soon as practicable after deposit and prior to any compaction of the waste The disposal location will be mapped and recorded in a site register The area will be signposted Will not be deposited within 2m of the final tipping surface of the landfill No work will be carried out on the landfill that could lead to the release of asbestos fibres
Contaminated solid waste	Receipt, handling and disposal by landfilling	<ul style="list-style-type: none"> Only accepted if it is supported by documentation that demonstrates compliance with the acceptance criteria for Class II landfills as defined in the document 'Landfill Waste Classification and Waste Definitions 1996 (As amended)' Written or electronic records of all contaminated solid wastes accepted for burial at the Premises will be maintained Disposed within the active landfill area
Hazardous waste (vehicle batteries, e-waste, fluoro globes)	Receipt, handling, storage prior to re-use or disposal by landfilling	<ul style="list-style-type: none"> Hazardous waste streams stored on insitu hardstand area Batteries stacked on pallets E-waste stored in a caged container Fluro tubes stored in 240L MGB
Hazardous waste (DrumMuster products)		<ul style="list-style-type: none"> All Drum Muster products must be triple rinsed prior to being accepted at the Facility for recycling Will be stored in a compound specifically for Drum Muster products Products will be palletised and wrapped prior to collection
Other recyclables		<ul style="list-style-type: none"> Stored in separate containers/bins Single stream collection facilities including cardboard and glass,
Hazardous waste (Waste oil)		<ul style="list-style-type: none"> Stored in an oil receptacle within a low permeability bunded area delineated for recycling.

4 EMISSIONS, DISCHARGES AND WASTE (PART 9 - ATTACHMENT 6A)

4.1 EMISSIONS AND DISCHARGES

Information to support **Table 9.1 'Emissions and Discharges'** on the application form has been provided below. The volume and frequency of the emissions from the Facility are unknown and generally dependent on weather conditions and operational practices.

Table 4.1 Emissions and Discharges (Table 9.1 of the application form)

Source of emission or discharge	Emission or discharge type	Proposed controls	Location
Landfill site operations	Noise	<ul style="list-style-type: none"> Operations emissions and operating times will comply with the Environmental Protection (Noise) Regulations 1997 (predicted noise emissions are not expected to exceed the regulations) Machinery operation and transport movements are scheduled to occur during standard business hours All mobile plant used onsite is regularly maintained Speed limits to be enforced on all site access roads A Complaints Register is maintained onsite to record any complaints received; this register should include the date, nature, and resolution action of any complaints received. 	See Figure 2.3
Landfill site operations	Dust	<ul style="list-style-type: none"> All trucks entering and leaving the Facility must be covered to prevent windblown emissions Entrance and site access roads to be well maintained Speed limits to be enforced Mobile water tank is kept onsite for wetting down surfaces if required Dust emissions will be monitored through visual inspections of disturbed and open areas to ensure that minimal visible dust generated by activities on the Premises crosses the boundary of the Premises 	
Landfill site operations	Litter	<p><i>Load controls</i></p> <ul style="list-style-type: none"> Facility users are subject to load and waste acceptance controls that require all normal loads to be secured with nets and tarpaulins to prevent the accumulation of litter along principal site access routes. Regular inspections of incoming vehicles to ensure loads are covered, secure, and not contributing to litter. Regular inspections of primary access routes with active litter clean up as required. <p><i>Waste Handling</i></p> <ul style="list-style-type: none"> Only operating a single open tip face Keeping the working area as tight as practicable Levelling and compacting waste regularly 	

Source of emission or discharge	Emission or discharge type	Proposed controls	Location
		<ul style="list-style-type: none"> Regularly applying cover material to the required depths <p><i>Fencing</i></p> <ul style="list-style-type: none"> A perimeter fence surrounding the Facility shall be maintained Litter screens will used on three sides around and within two meters of the tipping area <p><i>Litter collection</i></p> <ul style="list-style-type: none"> As it is practically impossible to prevent litter from escaping from the Premises, litter collections are to be regularly undertaken along access roads and buffer zones surrounding the Facility. Any waste that has been washed or blown away from the tipping area is collected and returned to the tipping area on a weekly basis 	
Landfill site operations	Vermin	<ul style="list-style-type: none"> Maintenance of a pest management program and treatments where required Regular pushing up and compaction of the waste in accordance with Table 3.3 Application of adequate cover material with putrescible waste covered daily in accordance with Table 3.3 Elimination of ponding water on the property where practicable Frequent removal of litter and contaminants and regular cleaning and maintenance of tipping areas will be undertaken 	
Waste mass	Landfill Gas	<ul style="list-style-type: none"> Facility staff will be trained on the health and safety risks posed by LFG emission and migration Where practicable organic matter will be included with soil used for daily cover to facilitate oxidising conditions for the breakdown of methane Greenwaste will be mulched and/or burned onsite to eliminate any additional LFG production from the biodegradation of this waste stream in the landfill Surface water will be managed to reduce the generation of leachate within the waste mass, which in turn will limit LFG generation. A risk evaluation for LFG accumulation will be undertaken for all existing and new structures located at the Facility. Buffers will be maintained from buildings and structures to minimise the risk of offsite migration of LFG. Capping and post-closure management of the landfill in line with the proposed LCMP 	
Waste mass	Odour	<ul style="list-style-type: none"> The waste types accepted at the Facility will be controlled in accordance with the waste acceptance procedures The size of the working face will be kept as small as possible Waste will not be deposited in standing water where practicable Waste will be covered regularly Municipal kerbside waste will be covered as soon as practicable and not later than the end of the working day Minimising disturbance of previously filled areas 	

Source of emission or discharge	Emission or discharge type	Proposed controls	Location
Waste mass & stockpile areas	Contaminated stormwater	<ul style="list-style-type: none"> Waste acceptance criteria limits set for the Premises (mass and type of waste) Surface water will be diverted away from the landfill cell and waste stockpile areas through the use of bunds constructed from insitu material to limit the ingress of surface water flows Waste will only be placed within a defined trench or an area enclosed by earthen or other bunds Waste is placed within a defined trench of restricted length (30 m) Regular covering of waste Undisturbed and rehabilitated / revegetated areas will be maintained as filters for sediment from disturbed sub-catchments 	
Waste mass	Leachate	<ul style="list-style-type: none"> Waste acceptance criteria limits set for the Premises (mass and type of waste) Waste is placed within a defined trench of restricted length (30 m) Regular covering of waste Inactive trenches covered with > 1 m soil cover Only operating one active landfill face Clean stormwater is directed away from any areas where waste is present Regularly compacting waste to minimise rainwater infiltration 	
Landfill site operations	Fire /smoke emissions	<ul style="list-style-type: none"> See section 3.1.13 of the Supporting Category Checklist Report for detailed information on fire prevention, preparation, and response practices 	
Greenwaste stockpiles			
Hazardous waste storage	Spills, contaminated stormwater	<ul style="list-style-type: none"> Environmentally hazardous materials to be stored in accordance with the Code of Practice for the Storage of Dangerous Goods Hazardous materials (batteries, e-waste, fluorescent tubes) stored on insitu hardstand Waste oil is stored in an enclosed oil receptacle within a bunded area Batteries stacked and stored on pallets E-waste stored in a caged container Fluro tubes stored in 240L MGB on insitu hardstand 	

4.2 WASTE TYPES

Information to support **Table 9.2 'Waste types'** on the application form has been provided below.

	Waste type	Quantity	Waste activity Infrastructure (incl. specifications)	Monitoring (if applicable)	Location (onsite layout plan)
1	Clean fill	Combined total of not more than 5,000 tonnes per annum	Buried onsite or kept for cover material	N/A	See Figure 2.3
2	Inert waste type 1		<ul style="list-style-type: none"> Scrap metal stockpiled within a three sided bunded area on an insitu hardstand for offsite recycling C&D waste stockpiled within a three sided bunded area on an insitu hardstand for offsite recycling 		
3	Putrescible Waste (including greenwaste)		<ul style="list-style-type: none"> Greenwaste stored in windrows within a three sided bunded area on an insitu hardstand within Putrescible mixed waste buried in unlined landfill cells. Waste disposed to landfill in accordance with process and emissions controls specified in Table 3.3 and Table 4.1. 		
4	Contaminated solid waste		Buried in unlined landfill cells		
5	Special waste type 1 (Asbestos)		<ul style="list-style-type: none"> Buried onsite in unlined landfill cells Asbestos waste landfilled in accordance with controls as specified in Table 3.3 		
6	Hazardous waste (used oil, vehicle batteries, e-waste, fluro globes)		<ul style="list-style-type: none"> Hazardous materials (batteries, e-waste, fluorescent tubes) stored on insitu hardstand Waste oil is stored in a purpose built enclosed oil storage unit within a bunded area Batteries stacked and stored on pallets on insitu hardstand E-waste stored in a caged container on an insitu hardstand Fluro tubes stored in 240L MGB 		
8	Other recyclables		<ul style="list-style-type: none"> Stored in single stream collection bins 		
7	Inert waste type 2 (tyres)	Up to 99 tyres	Tyres stored on pallets, on insitu hardstand		

5 SITING AND LOCATION (ATTACHMENT 7 - PART 10)

5.1 SENSITIVE LAND USES

Residential properties commence 1.5km northwest of the Site being the Lancelin townsite, while another smaller subdivision is located 630m to the southeast. The rural residential subdivision of Karakin is located 2.7km to the east. (see **Figure 5.1** and **Figure 5.2.**)

Figure 5.1 Siting of the Lancelin Waste Management Facility

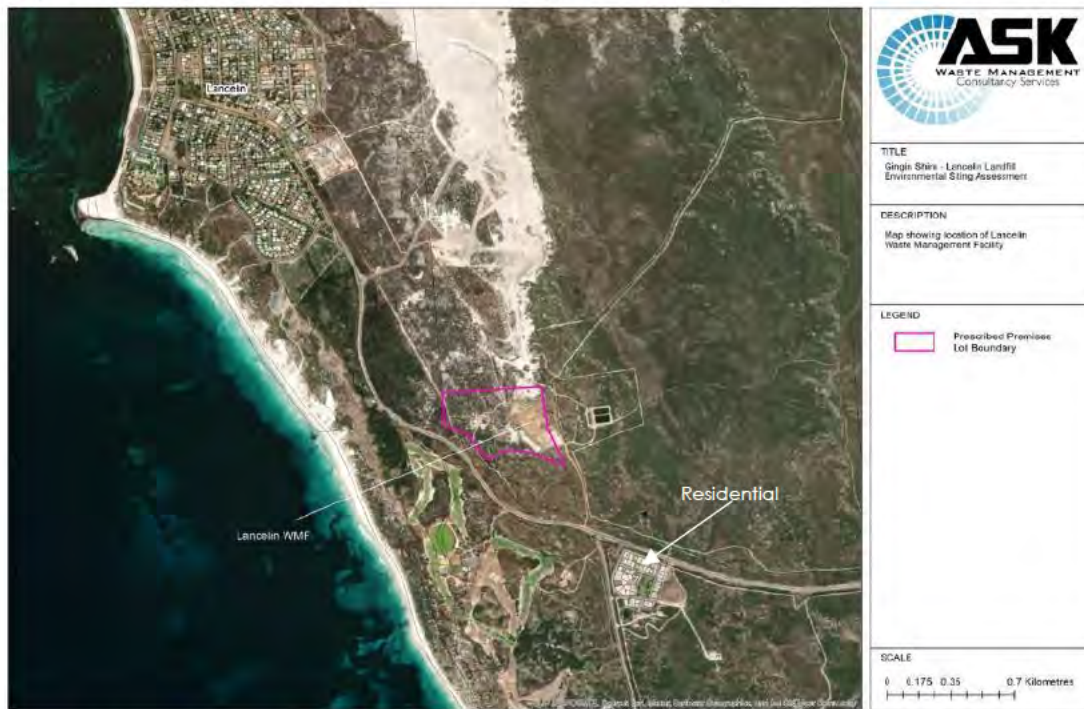
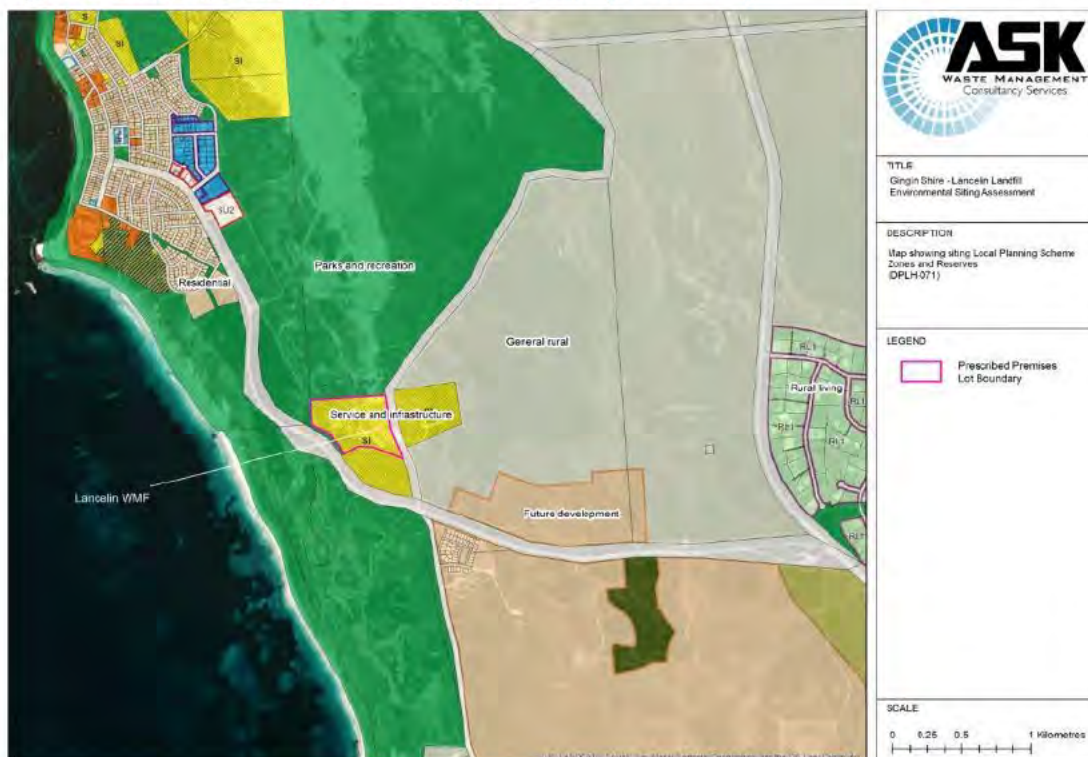


Figure 5.2 Landuse zoning surrounding the LWMP (DPLH – 071)



5.2 NEARBY ENVIRONMENTALLY SENSITIVE RECEPTORS

A high level search of publicly available GIS datasets was undertaken to ascertain the LWMF's siting context. Results for the key site assessment criteria from the Department of Water and Environmental Regulation's Guidance Statement: Environmental Siting (2016) are shown in **Figure 5.3**.

The assessment indicates that most of the high level environmental siting criteria have been met, except the following:

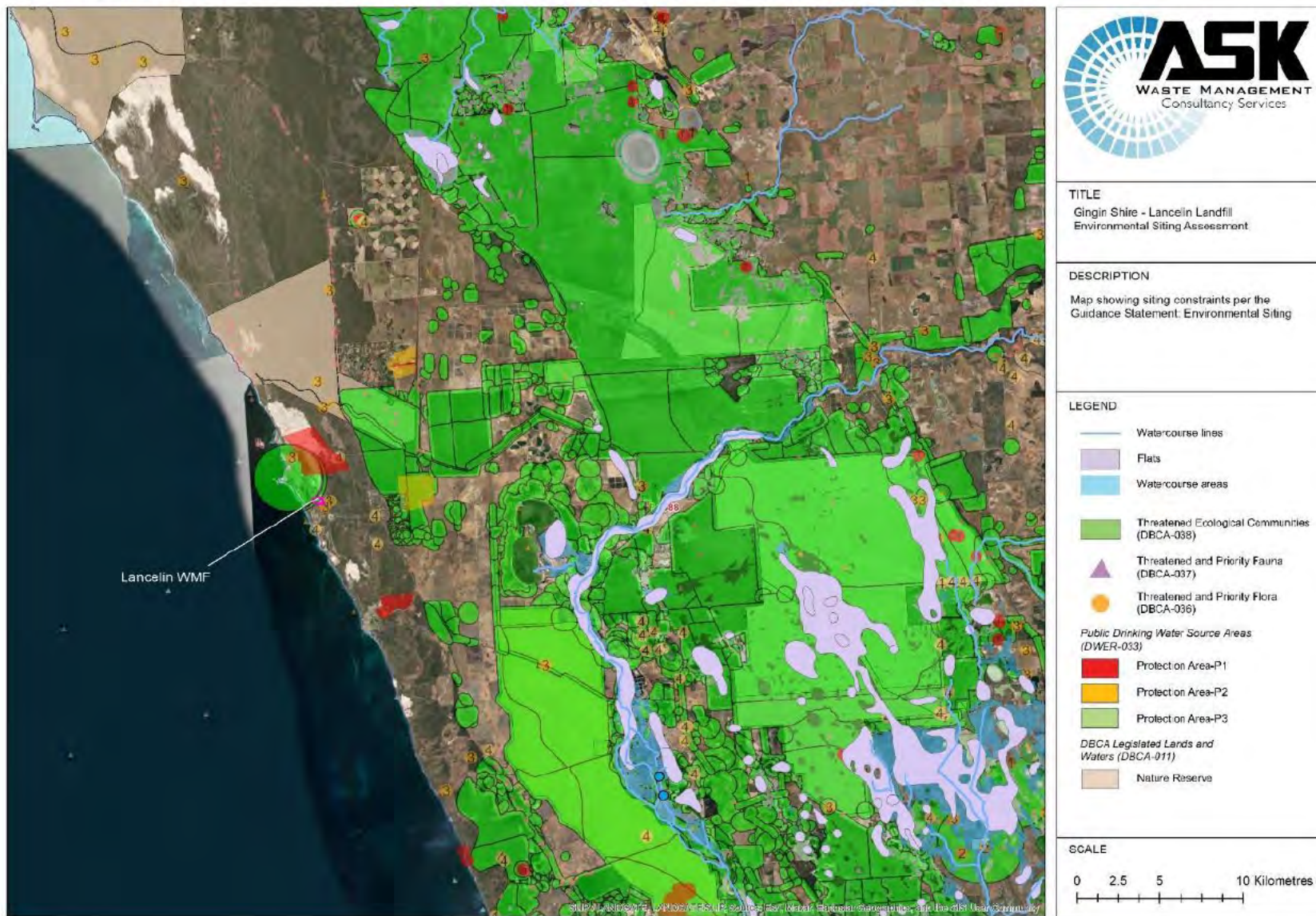
- the residential subdivision 630m southeast of the Site boundary is within the 1000m buffer as required under the DWER Odour Guideline 2019
- the Site coincides with an identified area of threatened communities
- species of threatened and priority flora have also been identified within 250 m of the site boundary.

As required in the application form, **Table 5.1** lists the nearby environmentally sensitive receptors, the distances and directions to each, and the measures taken to prevent or mitigate the impact on these receptors.

Table 5.1 Nearby environmentally sensitive receptors and aspects (Table 10.2 of Application Form)

Type / classification	Description	Distance and direction to premises boundary	Proposed controls
Environmentally Sensitive Areas	None	-	Refer to Section 4 (emissions, discharges, and wastes)
Threatened Ecological Communities	Sedgelands in Holocene dune swales of the southern Swan Coastal Plain	Community located within the northwest corner of the prescribed premises boundary	
Threatened and/or priority fauna	See Figure 5.4 and Figure 5.5	May occur within 2km from the boundary of the prescribed premises	
Threatened and/or priority flora	<ul style="list-style-type: none"> • <i>Hibbertia leptotheca</i> • <i>Constylis pauciflora</i> subsp. <i>euryhipis</i> • <i>Stylidium maritimum</i> 	within 250m of the southeast corner of the boundary of the prescribed premises	
Aboriginal and other heritage sites	Ledge Point – Aboriginal Cultural Heritage Historic Place (Camp, Water Source)	Facility located within the cultural heritage site	
Public drinking water source areas	Lancelin Water Reserve	1.4km north	
	Seaview Park Water Reserve	4.5km east	
Rivers, lakes, oceans, and other bodies of surface water, etc.	Indian Ocean	600 west	
	Karakin Lakes	13km east	
Acid sulfate soils	NA	-	

Figure 5.3 DWER Environmental Siting criteria locations in relation to the Lancelin Waste Management Facility



5.2.1 THREATENED ECOLOGICAL COMMUNITIES, THREATENED AND PRIORITY FLORA AND FAUNA

A high level search of publicly available GIS datasets (DBCA 038, DBCA 037 and DBCA 036) was undertaken to ascertain the LWMF's siting context in relation to threatened ecological communities, threatened and priority fauna, and threatened and priority flora.

The assessment indicates the northwest corner of the prescribed premises lot is located within an area identified as a Critically endangered ecological community being 'Sedgeland in Holocene dune swales of the southern Swan Coastal Plain' (Threatened Ecological Communities and Priority Ecological Communities DBCA-038) as shown in **Figure 5.4** and **Figure 5.5**.

Threatened and Priority flora have also been recorded within 250m of the southeast corner of the prescribed premises boundary (**Figure 5.4** and **Figure 5.5**). These are listed as:

- *Hibbertia leptotheca*
- *Constylis pauciflora* subsp. *euryhipis*
- *Stylidium maritimum*

Figure 5.4 Proximity of the Facility to threatened ecological communities, priority fauna, and priority flora (DBCA 036,037 & 038)

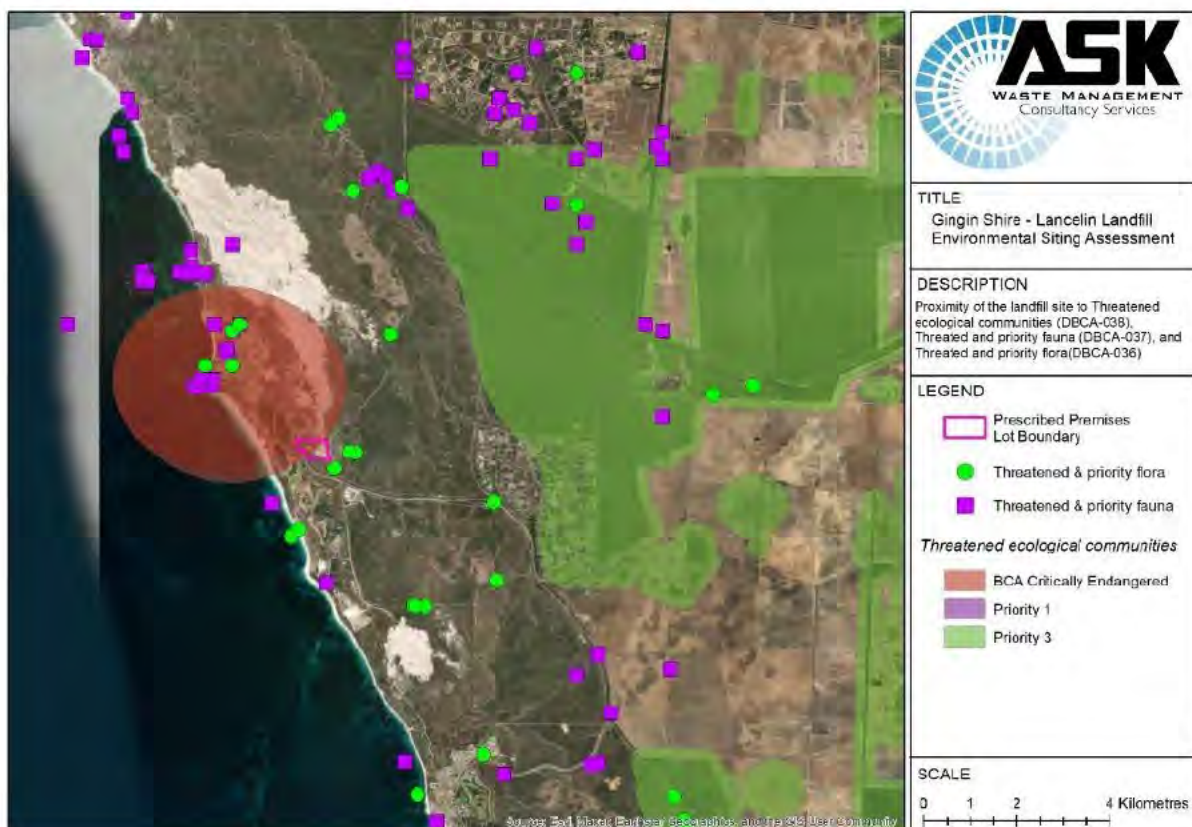
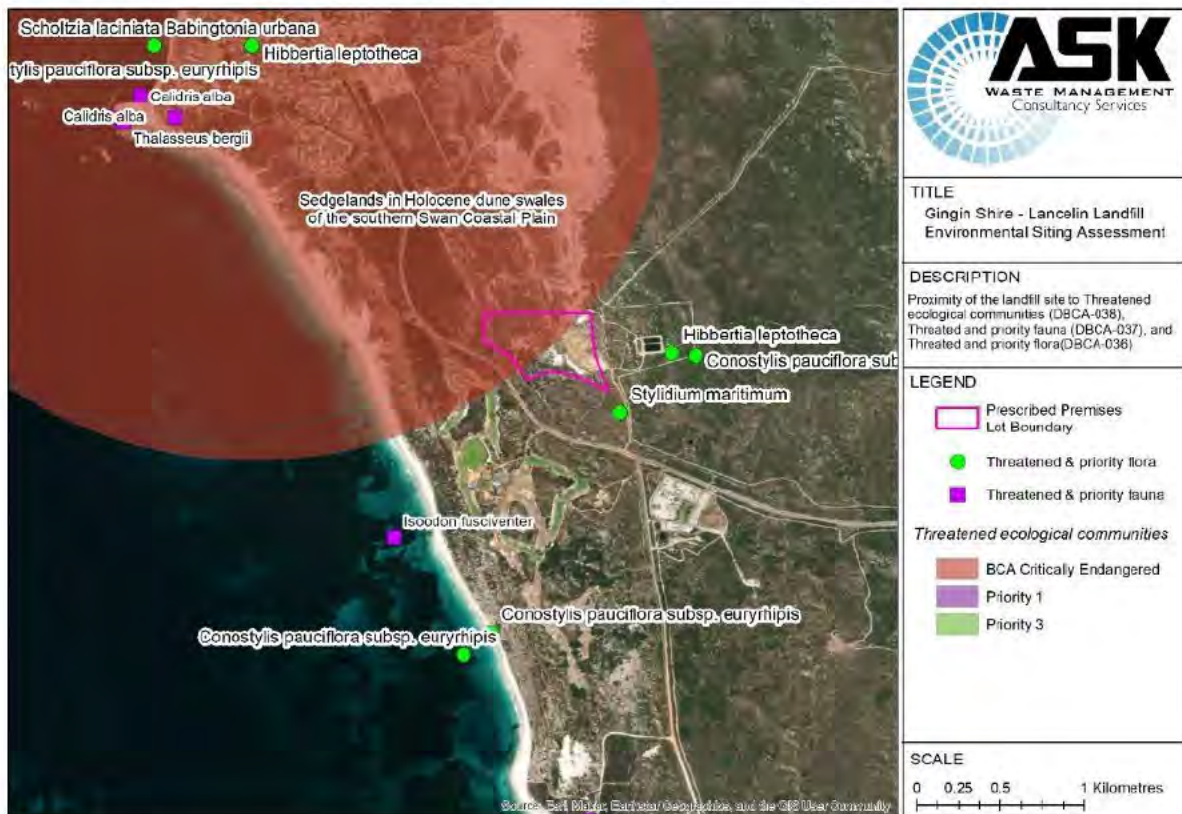


Figure 5.5 Proximity of the landfill to threatened ecological communities, priority fauna, and priority flora (detail) (DBCA 036,037 & 038)



5.3 SITING CONTEXT

The **Category Checklist (Solid Waste Landfills) Supporting Information Report** accompanying this application provides a summary of the environmental siting context details for the Facility. This information is contained within Section 1 of the report and contains relevant details on the Facility:

- Siting context
- Sensitive receptors and designated areas
- Local climate and meteorological data
- Topography, geology, and hydrology

Please refer to this report for the required information.

6 PROPOSED FEE CALCULATION (PART 13 - ATTACHMENT 10)

Based on the DWER online fee calculator for a licence or licence renewal, the total proposed licence fee is [REDACTED] as shown in Figure 6.1.

Figure 6.1 Online licence fee renewal calculator

Industry Licensing System

**Application Page 3 of 5
Licence Fees**

Fee start date: 26/12/2023

Fees calculator

If you are applying for a licence or submitting your annual licence fee information you must provide the following details in accordance with the Environmental Protection Regulations 1987. Guidance on calculating licence fees is available on the DWER website.

All supporting information, workings, calculations and assumptions made in the fee calculations should be attached on Application Page 4. DWER officers may reject fee applications or request resubmissions if information is missing or incomplete, for example, if some of the prescribed waste components have not been appropriately considered. It is the applicant's or licensee's responsibility to ensure that their fee application is appropriate and complete. Rejected applications and resubmission requests could delay your application and may incur penalty fees.

Premises Component
Select the prescribed premises category undertaken

Premises Component(s)

Category	Capacity Range	Fee	
64 - Class II or III putrescible landfill site Selection required	Not more than 5000 tonnes per year Select capacity range	[REDACTED]	Remove Add
Total Premises Component(s)		[REDACTED]	

Part 2 Waste

Waste Type	Amount	Fee	
004 - No Emissions Incur a Fee Selection required	Not applicable Select location	\$0.00	Remove Add
Total Waste Component(s):		\$0.00	

Part 3 Waste

Discharges to Air:

Waste Type	Location / Qualifier	Units	Discharge	Fee	
001 - No Emissions Incur a Fee Selection required	Not applicable Select location	per annum N/A	0 [REDACTED]	\$0.00	Remove Add
Total Air Component(s):				\$0.00	

Discharges to Water:

Waste Type	Location / Qualifier	Units	Discharge	Fee	
003 - No Emissions Incur a Fee Selection required	Not applicable Select location	kg/day N/A	0 [REDACTED]	\$0.00	Remove Add
Total Water Component(s):				\$0.00	

Discharges to Land:

Waste Type	Location / Qualifier	Units	Discharge	Fee	
002 - No Emissions Incur a Fee Selection required	Not applicable Select location	kg/day N/A	0 [REDACTED]	\$0.00	Remove Add
Total Land Component(s):				\$0.00	

Total Fee

Total Licence Fee: [REDACTED]

[Back](#) [Exit](#) [Continue](#)